

2015-16 Community Health Needs Assessment

Mobile County, Alabama

Prepared by:



Community Health Needs Assessment Mobile County, Alabama – 2015-16

Executive Summary	
Introduction	1
Community Definition	2
Methodology	4
<i>Participants in the Assessment Process</i>	
<i>Health Status Indicators</i>	
<i>Framework for Analysis</i>	
<i>Summary of Findings</i>	
<i>Community Input - Health Status Assessment Survey</i>	
Community Health Priorities	8
<i>Priority Setting Process</i>	
Access to Care	9
Healthy Weight	14
Mental Health/ Substance Abuse	16
Attachments:	
A - Health Status and Demographic Indicators	
B - Health Status Assessment Surveys and Results	
C- Hospital Facility Evaluation of Actions	

2015-16 Community Health Needs Assessment Mobile County, Alabama

Executive Summary

From September 2015 through March 2016, Providence Hospital (“Providence”), in collaboration with other community organizations and agencies, conducted a community health needs assessment (“assessment”) for Mobile County. This needs assessment is for Mobile County, Alabama, the county of residence for approximately 83 percent of Providence inpatients.

Input from the community included persons with a broad knowledge of the community, health and human services providers, stakeholders and representatives of the public. Special attention was given to obtaining input from the medically underserved and vulnerable populations. Key informants included individuals with public health expertise, state and local officials, community leaders and healthcare consumers.

Quantitative data were obtained from county, state, and national sources in order to develop a social, economic, and health assessment of Mobile County. The indicators included public health surveillance data, such as deaths and births. Sixty-six health indicators for Mobile County were compared and contrasted to those for the state and surrounding counties. In addition, local data were compared to previous years’ data from Mobile County, highlighting improvements and statistical trends.

To identify the issues of greatest priority for the community, the indicator results were evaluated using the County Health Rankings Model created by the University of Wisconsin Population Health Institute and the Robert Wood Johnson Foundation. The model emphasizes factors that, when improved, can help improve the overall health of a community. This model has three major components: Health Outcomes, Health Factors, Programs and Policies. Of the 66 health status indicators, Mobile County was worse than the state average on 44 indicators.

Prioritization of the community health issues was a multi-step process that included:

- Review and discussion of all of the top health concerns and associated indicator data.
- Identification and discussion of consequences of not addressing the issue.
- Consideration of key criteria for impacting change.

Through the assessment process described in further detail in this report, the top priority health issues identified for Mobile County are:

- * Access to Care
- * Weight
- * Mental Health/Substance Abuse

2015-16 Community Health Needs Assessment Mobile County, Alabama

Introduction

From September 2015 through March 2016, Providence Hospital, in collaboration with other community organizations and agencies, conducted a community health needs assessment (“assessment”) for Mobile County. The overarching goals of this report include:

- Examination of the current health status across Mobile County as compared to Alabama
- Identification of the current health concerns among Mobile County residents within the social and economic context of their community
- Documentation of community strengths, resources, forces of change, and opportunities for health service provision to inform funding and programming priorities of Mobile County

Providence Hospital and its multi-specialty physician network are ministries of Ascension Health, the nation’s largest Catholic and non-profit health system. Providence has answered the call to serve, to care and to heal since 1854.



Providence Hospital, a 349-bed facility, cares for more than 15,000 inpatients and 150,000 outpatients each year. Specialized services offered at Providence Hospital include open-heart surgery, cancer care, obstetrics, a freestanding rehabilitation and wellness center and an Outpatient Center with dedicated outpatient diagnostic services and surgical suites. Providence Hospital has received an “A” grade for hospital safety from the Leapfrog Group in each rating period since Fall 2013, and was rated the safest hospital in Mobile by a national consumer ratings firm.

Providence shares the Ascension Health mission: *“Rooted in the loving ministry of Jesus as healer, we commit ourselves to serving all persons with special attention to those who are poor and vulnerable. Our Catholic health ministry is dedicated to spiritually centered, holistic care, which sustains and improves the health of individuals and communities. We are advocates for a compassionate and just society through our actions and our words.”*

Providence and Ascension also share these core values:

- Service of the poor: Generosity of spirit, especially for persons most in need
- Reverence: Respect and compassion for the dignity and diversity of life
- Integrity: Inspiring trust through personal leadership
- Wisdom: Integrating excellence and stewardship
- Creativity: Courageous innovation
- Dedication: Affirming the hope and joy of our ministry

Community Definition

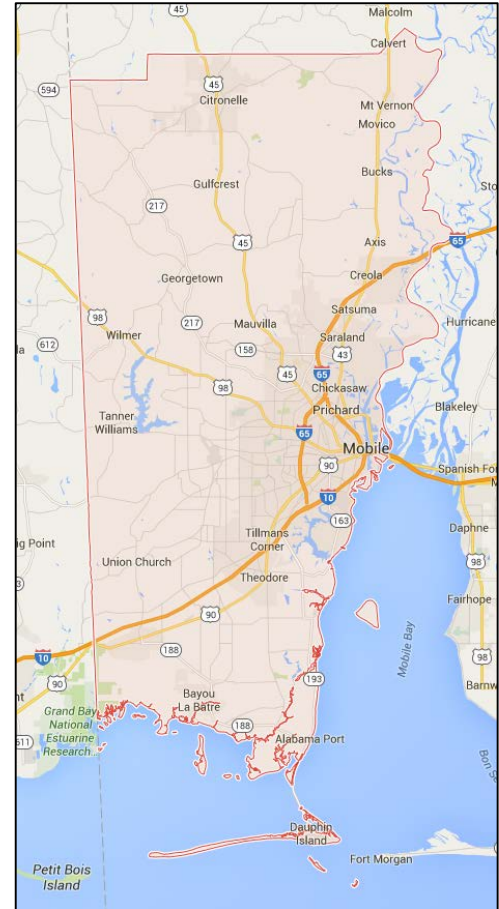
Geography

This needs assessment is for Mobile County, Alabama, the county of residence for approximately 83 percent of Providence Hospital inpatients in the past two years. Mobile County comprises some 1,644 square miles of surface area, with a land area of 1,229 square miles. Mobile County is bounded by the Gulf of Mexico to the south, Mobile Bay and the Mobile River Delta to the east, the Mississippi state line to the west, and Washington County to the north. The county is served by two airports, a deep-water port, five Class I railroads, Interstates 10 and 65, and a system of U.S., state and county roads.

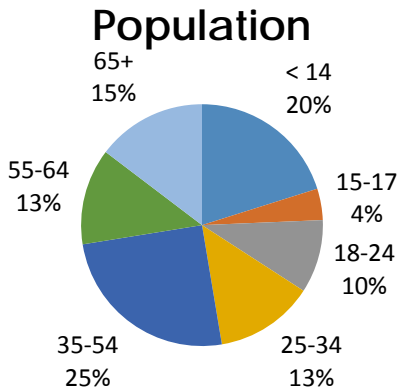
Demographics

The 2015 population of Mobile County is estimated at 414,005, the second-largest county in the state. It is a stand-alone Metropolitan Statistical Area. Nearly 80 percent of the population lives in urbanized areas, but these areas comprise only 18.6 percent of the land area. Mobile is the largest city, with an estimated 2014 population of 194,675 and a land area of 139 square miles. Other incorporated cities and towns include Prichard (22,399), Saraland (13,710), Satsuma (6,156), Chickasaw (6,010), Citronelle (3,875), Semmes (3,115), Bayou La Batre (2,639), Creola (1,922), Mount Vernon (1,555) and Dauphin Island (1,238).

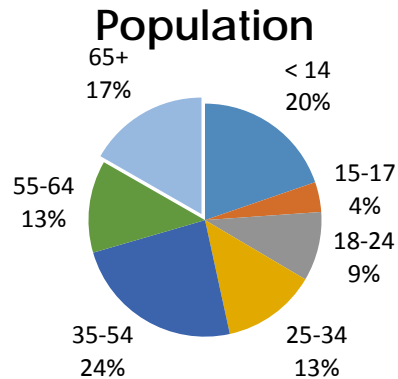
As shown in the charts below, the greatest change that will affect Mobile County in the next five years is the aging of the population. The population age 65 or older in 2010 was 53,321. In 2015, it reached 60,719 and in 2020, it is expected to be 69,901. This is seven times the total county growth from 2010 to 2015, and more than twice total growth in the five years ahead.



Mobile County 2015



Mobile County 2020



Nonetheless, in 2015 Mobile County is “younger” in aggregate than the state and nation, with a median age of 37.1, compared to 38.5 for the state and 37.9 nationally. This is due to a higher percentage of children under 14, at 20.1 percent in the county, compared to 19 percent in Alabama and 19.1 percent in the U. S. There are an estimated 33,600 veterans in the community.

The population of Mobile County is 58.9 percent white, 35.5 percent black and 5.6 percent other. The U.S. Census Bureau considers Hispanic/Latino heritage as an ethnicity versus a race. This would mean that spread throughout all races are the 2.8 percent of Mobile County residents who identify as Hispanic or Latino. The Hispanic/Latino population of Mobile County is less than the state average of 4.4 percent; as with the rest of the state and the nation the actual number is higher due to the number of undocumented persons who do not complete the Census. The dominant language is English, with 5 percent speaking another language in the home. Approximately 2 percent have limited English proficiency, primarily Spanish and Asian/Pacific language speakers.

Why are these characteristics important?

- * Population growth can strain health care resources and other infrastructure, particularly where limited resources already exist.
- * The elderly (persons age 65 and older) utilize three to four times the healthcare services required by younger populations.
- * Different gender and age groups utilize significantly different types and levels of health care services, particularly male versus female, pediatric versus adults, and elderly patient populations.
- * Language and cultural differences create the need for different approaches to improving access to health services

In most areas of Mobile County, the schools are operated by the Mobile County Public School System. The cities of Chickasaw, Saraland and Satsuma have separate school systems. The Mobile County Public School System is the largest in the state with an enrollment of nearly 59,000 students, and approximately 7,300 employees. The State of Alabama operates the Alabama School of Mathematics and Science in Mobile, which boards advanced Alabama high school students. Mobile also has a large number of private schools; most have religious affiliations. Private schools include nine Catholic, eight Protestant, one Islamic, and three non-sectarian preparatory schools. The high school graduation rate is 77 percent compared to 81 percent for the state and 82 percent for the nation. Of the county’s residents, 21.2 percent hold a Bachelor’s degree or higher. Mobile has one public, doctoral-level university, the University of South Alabama, and a state community college, Bishop State University, with three campuses. The latter is historically African-American. Other colleges and universities in Mobile are Spring Hill College (Catholic), the University of Mobile (Southern Baptist) and several private (primarily technical) schools. The University of South Alabama has one of the two public medical schools in Alabama, graduating 75 students per year.

In Mobile County, the median family income is \$43,733 and the percentage of residents living below the poverty level is 19.9 percent. The unemployment rate for Mobile County is 7.0 percent, while the Alabama average is 5.9 percent and the national average is 5.0 percent. Overall, the county is doing well on many economic indicators. Aerospace, retail services, construction, healthcare and manufacturing are the major industries. Mobile’s largest employers include:

- ♦ Mobile County School System
- ♦ Infirmery Health System
- ♦ Providence Hospital
- ♦ University of South Alabama & USA Health System
- ♦ Walmart
- ♦ City of Mobile
- ♦ Mobile County
- ♦ Springhill Medical Center
- ♦ Regions Bank
- ♦ ST Mobile Aerospace and Engineering
- ♦ Austal USA
- ♦ Atlantic Marine Alabama

Why are these characteristics important?

- * Socioeconomic status plays a major role in health and healthcare. It affects access to healthcare services as well as diet, housing conditions, and other environmental conditions that affect health.
- * Generally, the higher one's socioeconomic status, the better health care coverage they have, which allows them to get routine check-ups as well as surgery, if and when needed, at a lower out-of-pocket cost. It also can enable better access to providers outside of health plan provider networks.
- * The rate of employment is directly correlated with health insurance coverage, since most people still get health insurance through their employer. To some degree, this has changed under the Affordable Care Act through the creation of health insurance exchanges that provide access to health insurance to individuals and families outside of the work place. However, the exchanges' impact has been limited in Mobile County. Exchange policies tend to have high out-of-pocket costs,
- * Even with the relatively lower rate of unemployment in Mobile County, access to health care services may still be problematic. Employers who do provide health insurance are shifting a greater share of the cost of such coverage to employees through plans with higher premiums, deductibles and co-pays. As a result, median household and per capita income are important indicators of access to care. The very low relative income levels of the population in Mobile County suggest that access to care may be difficult for much of the county's population.

Additional demographic and socioeconomic data for Mobile County are provided in Attachment A.

Methodology

Participants in the Assessment Process

This assessment process was led by Providence Hospital, with active participation by the following community organizations and private and public agencies:

- American Cancer Society
- American Diabetes Association
- American Heart Association
- Bayou Clinic
- Big Brothers Big Sisters
- Feeding America
- Grand Bay Senior Center
- Guadalupe Center
- Infirmary Health
- Live Better Mobile
- March of Dimes
- Mobile Area Chamber of Commerce
- Mobile County Health Department
- North Baldwin Chamber of Commerce
- Providence Hospital Senior Center
- Rotary Rehab
- USA Center for Health Communities
- USA College of Nursing
- USA Health System

The assessment process occurred between September 2015 and March 2016 and included qualitative and quantitative data. To ensure input was obtained from persons with a broad knowledge of the community, e-mail notifications and invitations were sent to numerous stakeholders and representatives of the public. Special attention was given to obtaining input from the medically

underserved and vulnerable populations. Key informants included individuals with public health expertise, state and local officials, community leaders and healthcare consumers.

Health Status Indicators

Quantitative data were obtained from county, state, and national sources in order to develop a social, economic, and health assessment of Mobile County. The indicators included public health surveillance data, such as deaths and births. Data sources included, but were not limited to:

- Alabama Department of Public Health
- Mobile County Health Department
- Truven Health Analytics®
- County Health Rankings Model, University of Wisconsin Population Health Institute (Robert Wood Johnson Foundation)
- United States Census Bureau
- United States Bureau of Labor Statistics
- Federal Bureau of Investigation

Sixty-six health indicators for Mobile County were compared and contrasted to those for the state and surrounding counties. In addition, local data were compared to previous years' data from Mobile County, highlighting improvements and statistical trends.

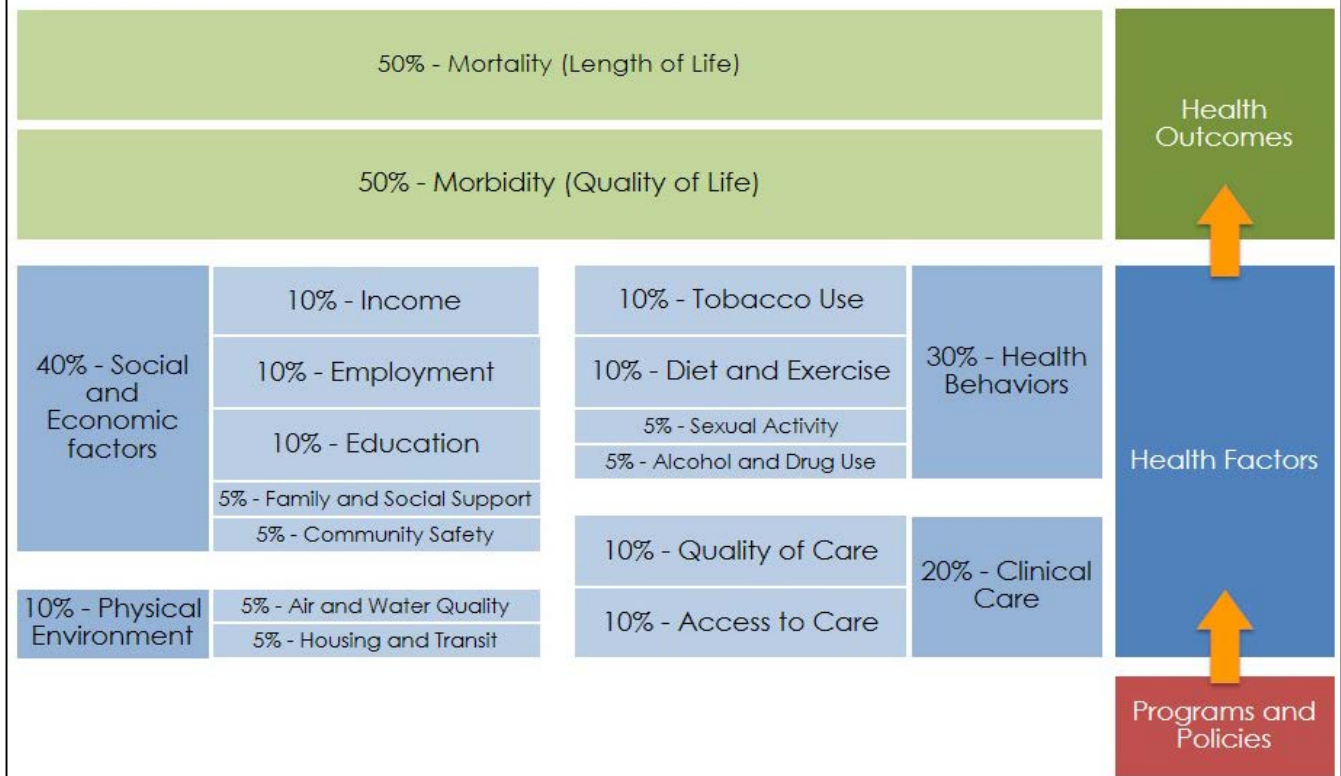
Framework for Analysis

To identify the issues of greatest priority for the community, the indicator results were evaluated using the County Health Rankings Model created by the University of Wisconsin Population Health Institute and the Robert Wood Johnson Foundation. The model emphasizes factors that, when improved, can help improve the overall health of a community. This model has three major components:

- **Health Outcomes** - This component evaluates the health of a community as measured by two types of outcomes: how long people live (Mortality / Length of Life) and how healthy people are when they are alive (Morbidity / Quality of Life).
- **Health Factors** - Factors that influence the health of a community including the activities and behavior of individuals (Health Behaviors), availability of and quality of health care services (Clinical Care), the socio-economic environment that people live and work in (Social and Economic Factors) and the attributes and physical conditions in which they live (Physical Environment). Although an individual's biology and genetics play a role in determining health, the community cannot influence or modify these conditions and therefore these factors are not included in the model. These factors are built from the concept of Social Determinants of Health (see inset, next page).
- **Programs and Policies** - Policies and programs at the local, state and federal level have the potential to impact the health of a population as a whole (i.e. smoke-free policies or laws mandating childhood immunization). As illustrated, Health Outcomes are improved when Policies & Programs are in place to improve Health Factors.

Health Ranking Model

County Health Rankings Model © 2014 UWPPI



Summary of Findings

Of the 66 health status indicators, Mobile County was worse than the state average on the following 44 listed below.

Health Outcomes	
Mortality – Length of Life	
<ul style="list-style-type: none"> ♦ Premature death ♦ Diabetes ♦ Breast Cancer ♦ Prostate Cancer ♦ Lung Cancer ♦ Malignant Neoplasms (Cancer) 	<ul style="list-style-type: none"> ♦ Chronic Liver Disease, Cirrhosis ♦ Ischemic Heart Disease ♦ Major Cardiovascular Disease ♦ HIV/AIDS ♦ Homicide ♦ Other Accidental
Morbidity – Quality of Life	
<ul style="list-style-type: none"> ♦ Poor mental health days ♦ Poor or fair health ♦ Poor physical health days 	

Health Factors	
Health Behaviors	Socioeconomic
<ul style="list-style-type: none"> ♦ Adult smoking ♦ Adult obesity ♦ Physical inactivity ♦ Food environment index ♦ Alcohol-impaired driving deaths ♦ Excessive drinking ♦ Births to Women Ages 10 to 19 ♦ Sexually transmitted infections ♦ Teen births 	<ul style="list-style-type: none"> ♦ Families below Poverty Level ♦ Persons below Poverty Level ♦ Median Earnings for Workers ♦ Income inequality ♦ Children in single-parent households ♦ Social associations ♦ Unemployment ♦ High school graduation ♦ Bachelor's Degree or Greater ♦ Murder rate ♦ Violent Crime rate ♦ Forcible Sex Offenses ♦ Aggravated Assault ♦ Property Crimes rate ♦ Injury deaths
Clinical Care	Physical Environment
<ul style="list-style-type: none"> ♦ Uninsured ♦ Mammography screening 	<ul style="list-style-type: none"> ♦ Air pollution - particulate matter ♦ Severe housing problems

A detailed listing of the health status indicators, definitions and sources for the State and Mobile County is provided in Attachment A.

Community Input - Health Status Assessment Survey

Qualitative information was obtained through meetings with community partners, and two surveys developed to determine views of the health of the community, its residents, and the health care system. The survey asked 25 questions ranging from health related opinions, ideas, statistics, and basic demographic information. It was conducted between October and December 2015. The first survey was conducted with local health and human services organizations that primarily represent vulnerable populations. The second survey was conducted on-line or in paper format throughout the community with additional targeted distribution to area churches, community service sites, and community centers to reach vulnerable populations. In some cases, volunteers were available to help complete the survey. Vulnerable populations were defined as people who met one of the following criteria: no health insurance; family income of \$25,000 or less; or those who took the survey at a service site for low-income populations, e.g., Federally Qualified Health Clinics (FQHC) or faith-based health clinics.

Survey Population	Mobile County
General Population	223
Vulnerable Population	120
Health and Human Service Organizations	58
Total Surveys	401

A demographic breakdown of survey respondents compared to the overall population of Mobile County is provided below. These show some selection bias was present.

Survey Demographics

	Respondents	Mobile Population *
Female	81.3%	60.1%
Black/African American	16.6%	35.3%
White/Caucasian (not Hispanic)	79%	62.1%
Bachelor's Degree or Higher	48%	21.4%
Unemployed	6.2%	7.0%
Income Less Than \$35,001/Year	41.2%	Median Income \$43,733

*Census "Quick facts." V2014

The key issues identified from the survey input include:

Most Important Health Issues	
<ul style="list-style-type: none"> • Obesity / Excess weight • Drug use / abuse • Mental health problems • Aging problems (e.g. dementia, vision/hearing loss, loss of mobility) 	<ul style="list-style-type: none"> • Heart disease and stroke • Cancers • Diabetes
Most Concerning Unhealthy Behaviors	
<ul style="list-style-type: none"> • Drug abuse • Poor eating habits / poor nutrition • Excess weight • Alcohol abuse 	<ul style="list-style-type: none"> • Not seeing a doctor or dentist • Lack of exercise • Homelessness

Survey instruments and full survey response data are provided in Attachment B.

Community Health Priorities

Priority Setting Process

Priorization of the community health issues was a multi-step process that included:

- Review and discussion of all of the top health concerns and associated indicator data.
- Identificaton and discussion of consequences of not addressing the issue.
- Consideration of key criteria for impacting change.

Top Priority Health Issues for Mobile County

Through the process described above, the top priority health issues identified for Mobile County were:

- * Access to Care
- * Weight
- * Mental Health/Substance Abuse

To increase understanding of the impact these health issues have on the community, these priorities are discussed in more detail in the following sections.

Access to Care

Access to comprehensive, high-quality health care services is important for health equity and increasing the quality of life. Access to health care impacts:

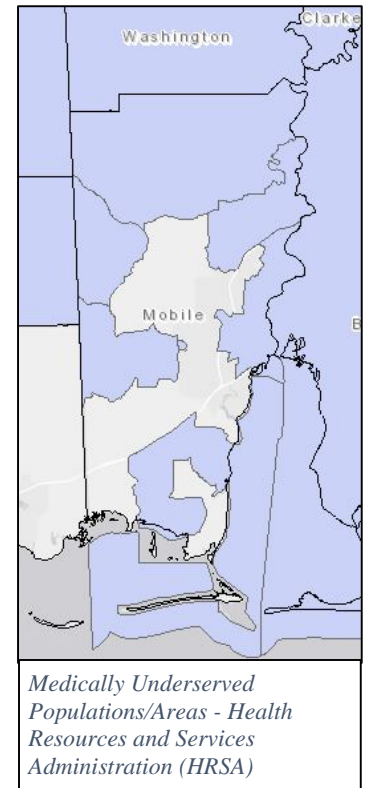
- Overall physical, social, and mental health status
- Prevention of disease and disability
- Preventable hospitalization
- Detection and treatment of health conditions
- Quality of life
- Preventable death
- Life expectancy

Access to health services encompasses four main components:

Services

Improving health care services depends in part on ensuring that people have a usual and ongoing source of care. People with a usual source of care have better health outcomes and fewer disparities and costs. The Health Resources and Services Administration (“HRSA”) defines areas and populations as Medically Underserved based on four weighted variables - ratio of primary medical care physicians per 1,000 population, infant mortality rate, percentage of the population with incomes below the poverty level, and percentage of the population age 65 or over.

Although County-wide data indicate there are qualifying Medically Underserved populations, those population are generally clustered in inner-city Mobile, Prichard, north/northwest Mobile County and Bayou La Batre, as identified by HRSA.



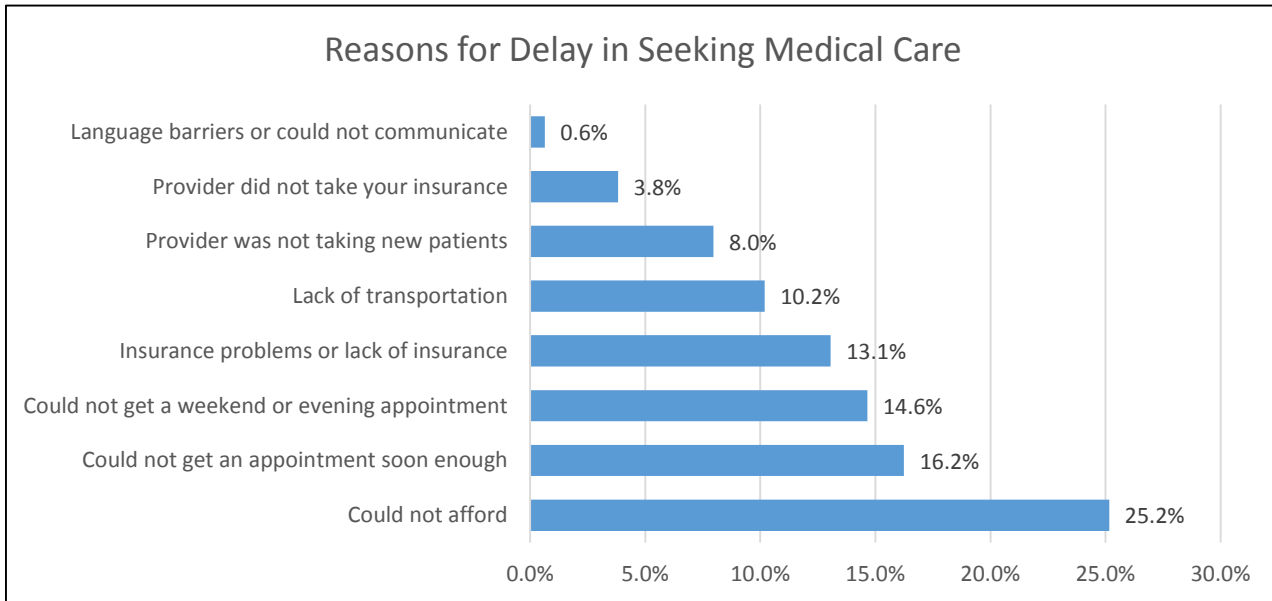
Indicator	Mobile County		Nation
	Most Recent Period	Prior Period	
Physicians (Population Per)	1,570	1,574	1,320
Infant Mortality	9.68%	10.9%	5.96%
Poverty	19.9%	19.2%	14.8%
Population age 65 or over	14.7%	12.9%	14.7%

Timeliness

Timeliness is the health care system's ability to provide services quickly after a need is recognized. Timeliness issues include the time between identifying a need for specific tests and treatments and actually receiving those services. Actual and perceived difficulties or delays in getting care when patients are ill or injured likely reflect significant barriers to care.

One of the questions asked in the Community Health Status Assessment survey was, “In the past 12 months, did you delay getting needed medical care for any of the following reasons.” Respondents were told to check all answers that applied (to them). 36.3 percent of respondents said that they did not delay

in getting care and 20.44 percent said they did not need medical care. The following reasons were given for delaying care:

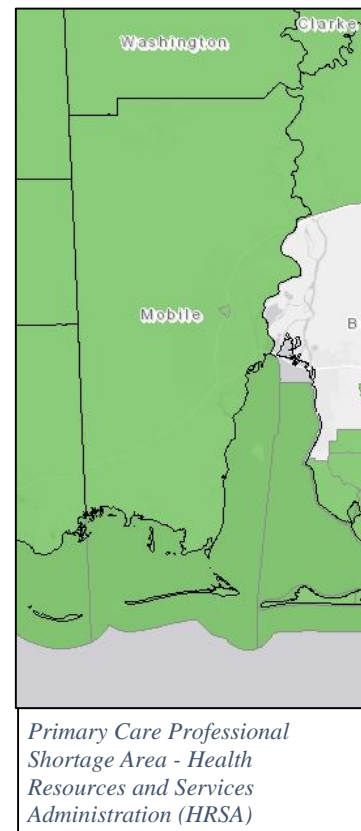


Workforce

Primary care physicians (“PCPs”) play an important role in the general health of the communities they serve. They typically develop meaningful and sustained relationships with patients and provide integrated services while practicing in the context of family and community. However, adequate availability of specialty physicians also impacts the overall health of a community.

Mobile County has fewer physicians per population in key primary care and other specialties than in the nation as a whole. Not only are primary care physicians in short supply, but the county has far fewer dentists per population than nationwide. Dental health has significant implications for overall health, so the scarcity of dentists is particularly alarming. Though the county’s health care workforce is comparable to the state, the state falls behind in each of the health care profession categories.

Indicator	Mobile County		Nation
	Most Recent Period	Prior Period	
Physicians (Population Per)	1,570	1,574	1,320
Dentists (Population Per)	2,020	2,070	1,540



Coverage

Health insurance coverage helps patients get into the health care system. Uninsured (and underinsured) people are less likely to receive medical care, are more likely to die early, and are more likely to have poor health status.

The percent of the population that is uninsured adults in Mobile County is high, exceeding the statewide rate. However, the percentage of uninsured adults in Mobile County decreased slightly compared to the prior period. Significantly, the uninsured rate does not account for those who are

underinsured or who have coverage in high deductible plans, which are becoming increasingly prevalent. As a result, median household income is an important indicator of access to care. The very low relative income levels of the population in Mobile County suggest that access to care may be difficult due to coverage issues for an even larger percentage of the population.

Indicator	Mobile County		State of Alabama
	Most Recent Period	Prior Period	
Insurance – Uninsured Adults	18%	19%	16%
Median Household Income	\$43,733	\$40,996	\$43,426
Unemployment	7.0%	5.9%	5.9%

Resources in Mobile County potentially available to address the Access to Care priority health issue include the following:

- Bayou Clinic
- Franklin Primary Health Centers
- Mobile County Health Department
- Mostellar Clinic
- Stanton Road Clinic
- VA Outpatient Clinic
- Victory Health Partners
- Providence Hospital Outreach in south Mobile County
- Providence Hospital CARE Program
- Ozanam Charitable Pharmacy
- Mercy LIFE
- Area Agency on Aging

Access to Care and Related Indicators

Legend:

County Performance Compared to the State	County Trend compared to the County in previous Data Period
Worse	Worsening
Better	Improving
Same, Neutral or No Data	

Health Outcomes

Mortality / Length of Life

Indicator	Data Period	Nation	State of Alabama	County Performance	County Trend
Premature death	2011-2013	6,600	9,500	10,300	
Infant Mortality	2013	5.96%	Not available	9.68%	

Indicator	Data Period	Nation	State of Alabama	County Performance	County Trend
Neonatal Deaths (0-27 days)	2013	4.04%	5.5	6.28%	
Post neonatal Deaths (28-364 days)	2013	1.93%	3.1	3.41%	
Diabetes	2013	23.9	27.9	28.5	
Breast Cancer	2013	13.1	13.8	14.0	
Colon, Rectal or Anus Cancer	2013	16.5	20.5	20.0	
Prostate Cancer	2013	8.8	9.7	9.9	
Lung Cancer	2013	49.4	65.5	71.7	
Malignant Neoplasms (Cancer)	2013	185.0	213.7	222.4	
Chronic Liver Disease, Cirrhosis	2013	11.5	11.9	14.0	
Chronic Lower Respiratory Disease	2013	47.2	62.9	54.6	
Cerebrovascular Disease	2013	40.8	53.6	52.9	
Ischemic Heart Disease	2013	117.1	110.6	145.9	
Major Cardiovascular Disease	2013	252.0	333.2	333.8	
Pneumonia, Influenza	2013	18.0	21.4	21.3	
HIV/AIDS	2013	2.2	2.5	4.6	
Morbidity / Quality of Life					
Poor or fair health	2014	14%	21%	24%	
Poor physical health days	2014	3.5	4.6	4.9	
Health Factors					
Clinical Care					
Uninsured	2015	11%	16%	18%	
Dentists (pop. Per)	2014	1,540	2,200	2,020	

Indicator	Data Period	Nation	State of Alabama	County Performance	County Trend
Mental health providers (pop. Per)	2015	490	1,200	1,230	
Primary care physicians (pop. Per)	2013	1,320	1,570	1,520	
Medicaid Births	2013		52.6	58.5%	
Diabetic monitoring	2013	85%	85%	86%	
Mammography screening	2013	63%	63%	62%	
Preventable hospital stays	2013	54	65	64	
Social and Economic Factors					
Children in poverty	2014	22%	27%	30%	
Families below Poverty Level	2013	12.7%	14.6%	16.2%	
Families below Poverty level With Children <18	2013	20.7%	23.5%	25.0%	
Persons below Poverty Level	2013	14.8%	18.9%	19.9%	
Population with Limited English Proficiency	2015			4,147	
Unemployment	2015	5.0%	5.9%	7.0%	

Healthy Weight

Obesity is common, serious, and costly. According to the Alabama Department of Public Health, the number one public health threat to Alabama's future is unhealthy weight. The estimated annual medical cost for people who are obese is \$1,429 higher than that for people of healthy weight. Currently, 36 percent of Alabamians are obese. With the current national trend, by 2030, almost 60 percent will be obese. Additionally, six out of ten children born today will be obese by the time they graduate high school.

Indicator	Mobile County		State of Alabama
	Most Recent Period	Prior Period	
Access to exercise opportunities	69%	74%	63%
Adult obesity	36%	36%	34%
Food environment index (10 is best)	5.9	5.9	6.6
Physical inactivity	29%	29%	29%

In Mobile County, excess weight and obesity are major problems. In most of the indicator categories directly related to weight, Mobile County performs substantially worse than the state and, in many indicators, the problem has gotten worse when

compared to the prior period. In addition, despite the beautiful surroundings and environment in many parts of the county, Mobile County residents are far less active than residents of the state overall. A lack of proper eating and poor exercise habits contribute to making excess weight and obesity a major health issue in Mobile County.

Obesity is a major contributor to many preventable chronic diseases and other poor health outcomes, including, but not limited to:

- Premature death
- Type 2 diabetes (noninsulin-dependent diabetes)
- Certain types of cancer
- Heart disease
- High blood pressure (hypertension)
- High cholesterol (dyslipidemia)
- Osteoarthritis
- Complications during pregnancy

Addressing unhealthy weight is complicated. To ensure the effectiveness of interventions, one must understand the personal, social, economic, and environmental barriers to, and facilitators of, changes in diet or physical activity, including:

<i>Factors Influencing Diet</i>	<i>Factors Influencing Physical Activity</i>
<ul style="list-style-type: none"> ♦ Knowledge and attitudes ♦ Skills ♦ Social support ♦ Societal and cultural norms ♦ Food and agricultural policies ♦ Food assistance programs ♦ Economic price systems ♦ Marketing/advertising (which influences people's, particularly children's, food choices) ♦ Access to and availability of healthier foods ♦ Where people eat (at home or away from home), i.e., foods eaten away from home often have more calories and are of lower nutritional quality than foods prepared at home 	<ul style="list-style-type: none"> ♦ Low income ♦ Lack of time ♦ Low motivation ♦ Rural residency ♦ Lack of social support from peers, family, or spouse ♦ Overweight or obesity ♦ Age and/or disabilities (inaccessibility) ♦ Physical environment: <ul style="list-style-type: none"> ○ Presence of sidewalks ○ Access to public transportation ○ Access to neighborhood or school play area and/or recreational equipment ○ Lack of transportation to facilities ○ Fear of injury

Resources in Mobile County potentially available to address this priority include the following:

- Providence Hospital Diabetes Center
- Feeding the Gulf Coast nutrition programs
- Junior League of Mobile
- City of Mobile
- Mobile County Public Schools
- Providence Farmers Market
- Providence Community Garden
- Live Better Mobile /Mobile United

Healthy Weight and Related Indicators

Legend:

County Performance Compared to the State	County Trend compared to the County in previous Data Period
Worse	Worsening
Better	Improving
Same, Neutral or No Data	

Health Outcomes					
Mortality / Length of Life					
Indicator	Data Period	Nation	State of Alabama	County Performance	County Trend
Premature death	2011-2013	6,600	9,500	10,300	
Diabetes	2013	23.9	27.9	28.5	
Colon, Rectal or Anus Cancer	2013	16.5	20.5	20.0	
Morbidity / Quality of Life					
Low Weight Births	2013	8.0%	10	12.1%	
Health Factors					
Health Behaviors					
Adult obesity	2012	27%	34%	36%	
Physical inactivity	2012	23%	29%	30%	
Food environment index	2013	7.2	6.6	5.9	
Access to exercise opportunities	2010 & 2014	84%	63%	69%	
Diabetic monitoring	2013	85%	85%	86%	

Mental Health/ Substance Abuse

Mental Health

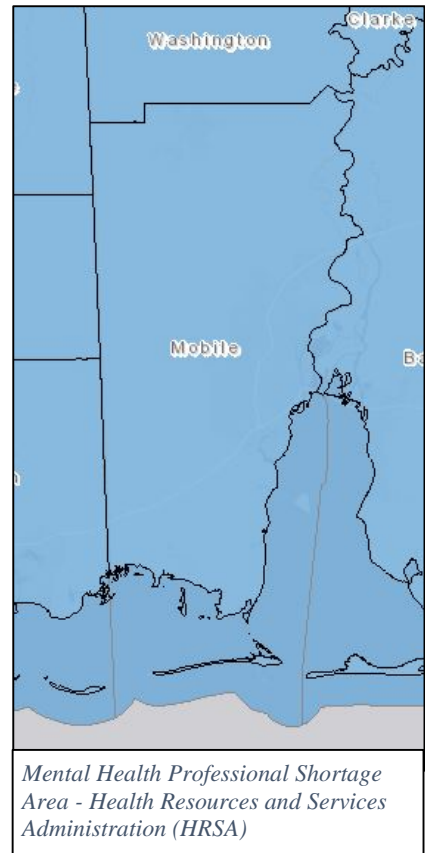
Mental health is a state of successful performance of mental function. It leads to productive activities, fulfilling relationships, and the ability to adapt to change and cope with challenges. Mental disorders are health conditions that are characterized by alterations in thinking, mood, and/or behavior that are associated with distress and/or impaired functioning. Mental illness is the term that refers, collectively, to all diagnosable mental disorders.

Mental disorders contribute to a host of problems that may include disability, pain, or death. Mental disorders are among the most common causes of disability. The resulting disease burden of mental illness is among the highest of all diseases. In addition, mental health and physical health are closely connected. Mental health plays a major role in people’s ability to maintain good physical health and participate in health-promoting behaviors. In turn, problems with physical health, such as chronic diseases, can have a serious impact on mental health and decrease a person’s ability to participate in treatment and recovery.

In Mobile County, 29.9% percent of respondents to the Community Health Status Assessment survey indicated that they felt that mental health problems were one of the most important health issues facing the county. However, only 6.3 percent of respondents indicated that they had been told by a health professional that they had a mental health problem. Of course, this finding could be misleading due to the self-reported nature of the survey and self-selection, i.e., people suffering from mental health problems may be less likely to have completed the survey.

The county performed poorly compared to the State on mental health indicators. Mobile County experienced an average of 5 unhealthy mental health days, compared to 4.6 and 3.5 for the state and nation respectively. This number increased in Mobile County from 4.8 days during the prior period.

In addition, Mobile County has fewer mental health providers per capita than the state and far fewer than the national average. Mobile County has one mental health provider per 1,230 people compared to one per 1,200 people in the state and 490 in the nation.



Substance Abuse

Substance abuse refers to a set of related conditions associated with the consumption of mind- and behavior-altering substances that have negative behavioral and health outcomes. Social attitudes and political and legal responses to the consumption of alcohol and illicit drugs make substance abuse one of the most complex public health issues.

In Mobile County, 35.5 percent of respondents to the Community Health Status Assessment survey indicated that they felt that mental health problems were one of the most important health issues facing the county. However, only 2.2 percent of respondents indicated that they had been told by a health professional that they had an alcohol or drug problem. Of course, this finding could be misleading due to the self-reported nature of the survey and self-selection.

The effects of substance abuse are cumulative and significantly contribute to costly social, physical, mental, and public health problems. These problems include, but are not limited to:

- Teenage pregnancy
- Human immunodeficiency virus/acquired immunodeficiency syndrome (HIV/AIDS)
- Other sexually transmitted diseases (STDs)
- Domestic violence
- Child abuse
- Motor vehicle crashes
- Crime
- Homicide
- Suicide

Indicator	Mobile County		State of Alabama
	Most Recent Period	Prior Period	
Births to Mothers Age 10 – 19 Rate	20.9	23.8	17.4
Alcohol-Related Motor Vehicle Traffic Crash Death Rate	37	38	30
Violent Crime Rate	511	585.9	427
Suicide Death Rate	13.8	15.7	14.9
Forcible Sex Offence Rate	47	40.8	41

Resources in Mobile County potentially available to address this priority include the following:

- AltaPointe
- Catholic Social Services
- National Alliance for Mental Illness
- SOMI Club Mental Health Center
- Bradford Health Services
- Emma Harvest Home for Women
- Home of Grace for Women
- Insight Treatment Program
- Mission of Hope
- Salvation Army
- Serenity Care
- The Shoulder
- VA Outpatient Clinic
- Waterfront Rescue Mission
- WINNERS

Mental Health and Substance Abuse, and related indicators

Legend:

County Performance Compared to the State	County Trend compared to the County in previous Data Period
Worse	Worsening
Better	Improving
Same, Neutral or No Data	

Health Outcomes					
Mortality / Length of Life					
Indicator	Data Period	Nation	State of Alabama	County Performance	County Trend
Infant Mortality	2013	5.96%	Not available	9.68%	

Indicator	Data Period	Nation	State of Alabama	County Performance	County Trend
Neonatal Deaths (0-27 days)	2013	4.04%	5.5	6.28%	
Post neonatal Deaths (28-364 days)	2013	1.93%	3.1	3.41%	
Chronic Liver Disease, Cirrhosis	2013	11.5	11.9	14.0	
Suicide	2013	13.0	14.9	13.8	
Morbidity / Quality of Life					
Poor mental health days	2014	3.5	4.6	5.0	
Health Factors					
Health Behaviors					
Alcohol-impaired driving deaths	2010-2014	31%	30%	37%	
Excessive drinking	2014	18%	14%	15%	
Births to Women Ages 10 to 19	2013	13.5	17.4	20.9	
Sexually transmitted infections	2013	446.6	611.0	792.4	
Teen births	2007-2013	35	44	53	
Clinical Care					
Mental health providers (pop. Per)	2015	490	1,200	1,230	
Social and Economic Factors					
Murder rate	2014	5	5.7	9.40	
Violent Crime rate	2014	366	427	511	
Forcible Sex Offense Rate	2014	37	41	47	
Aggravated Assault Rate	2014	233	283	320	
Property Crime rate	2014	2,596	3,178	4,006	

Next Steps

The next step in the Mobile County health improvement process will be to focus on community implementation planning, which includes program planning and evaluation metrics for each priority. Specific objectives for this phase will include, but not be limited to:

- Organizing work groups to develop action plans
- Identifying health improvement initiatives that are best practices for each priority
- Establishing an evaluation plan, including measurable outcome indicators
- Communicating progress and results to the Mobile County community

Attachment A - Health Status and Demographic Indicators

Legend:

County Performance Compared to the State	County Trend compared to the County in previous Data Period
Worse	Worsening
Better	Improving
Same, Neutral or No Data	

Health Outcomes								
Mortality / Length of Life								
Indicator	Data Period	Nation	State of Alabama	County Performance	County Trend	Healthy Weight	Mental Health and Substance Abuse	Access to Care
Premature death	2011-2013	6,600	9,500	10,300		✓		✓
Infant Mortality	2013	5.96%	Not available	9.68%			✓	✓
Neonatal Deaths (0-27 days)	2013	4.04%	5.5	6.28%			✓	✓
Post neonatal Deaths (28-364 days)	2013	1.93%	3.1	3.41%			✓	✓
Diabetes	2013	23.9	27.9	28.5		✓		✓
Breast Cancer	2013	13.1	13.8	14.0				✓
Colon, Rectal or Anus Cancer	2013	16.5	20.5	20.0		✓		✓
Prostate Cancer	2013	8.8	9.7	9.9				✓
Lung Cancer	2013	49.4	65.5	71.7				✓
Malignant Neoplasms (Cancer)	2013	185.0	213.7	222.4				✓
Nephritis, Nephritic Syndrome, and Nephrosis	2013	14.9	21.8	19.6				
Chronic Liver Disease, Cirrhosis	2013	11.5	11.9	14.0			✓	✓
Chronic Lower Respiratory Disease	2013	47.2	62.9	54.6				✓
Cerebrovascular Disease	2013	40.8	53.6	52.9				✓

Indicator	Data Period	Nation	State of Alabama	County Performance	County Trend	Healthy Weight	Mental Health and Substance Abuse	Access to Care
Ischemic Heart Disease	2013	117.1	110.6	145.9				✓
Major Cardiovascular Disease	2013	252.0	333.2	333.8				✓
Pneumonia, Influenza	2013	18.0	21.4	21.3				✓
HIV/AIDS	2013	2.2	2.5	4.6				✓
Homicide	2013	5.1	8.7	12.8				
Suicide	2013	13.0	14.9	13.8			✓	
Other Accidental	2013	29.3	28.3	29.5				
Transport Accident	2013	12.0	19.3	18.8				

Morbidity / Quality of Life

Indicator	Data Period	Nation	State of Alabama	County Performance	County Trend	Healthy Weight	Mental Health and Substance Abuse	Access to Care
Low Weight Births	2013	8.0%	10	12.1%		✓		
Poor mental health days	2014	3.5	4.6	5.0			✓	
Poor or fair health	2014	14%	21%	24%				✓
Poor physical health days	2014	3.5	4.6	4.9				✓

Health Factors

Health Behaviors

Indicator	Data Period	Nation	State of Alabama	County Performance	County Trend	Healthy Weight	Mental Health and Substance Abuse	Access to Care
Adult smoking	2014	17%	20%	21%				
Adult obesity	2012	27%	34%	36%		✓		

Health Behaviors (continued)

Indicator	Data Period	Nation	State of Alabama	County Performance	County Trend	Healthy Weight	Mental Health and Substance Abuse	Access to Care
Physical inactivity	2012	23%	29%	30%		✓		
Food environment index	2013	7.2	6.6	5.9		✓		
Access to exercise opportunities	2010 & 2014	84%	63%	69%		✓		
Alcohol-impaired driving deaths	2010-2014	31%	30%	37%			✓	
Excessive drinking	2014	18%	14%	15%			✓	
Births to Women Ages 10 to 19	2013	13.5	17.4	20.9			✓	
Sexually transmitted infections	2013	446.6	611.0	792.4			✓	
Teen births	2007-2013	35	44	53			✓	

Clinical Care

Indicator	Data Period	Nation	State of Alabama	County Performance	County Trend	Healthy Weight	Mental Health and Substance Abuse	Access to Care
Uninsured	2015	11%	16%	18%				✓
Dentists (pop. Per)	2014	1,540	2,200	2,020				✓
Mental health providers (pop. Per)	2015	490	1,200	1,230			✓	✓
Primary care physicians (pop. Per)	2013	1,320	1,570	1,520				✓
Medicaid Births	2013		52.6	58.5%				✓
Diabetic monitoring	2013	85%	85%	86%		✓		✓
Mammography screening	2013	63%	63%	62%				✓
Preventable hospital stays	2013	54	65	64				✓

Social and Economic Factors

Indicator	Data Period	Nation	State of Alabama	County Performance	County Trend	Healthy Weight	Mental Health and Substance Abuse	Access to Care
Median Household Income	2015	\$53,375	\$43,426	\$43,733				
Children in poverty	2014	22%	27%	30%				✓
Families below Poverty Level	2013	12.7%	14.6%	16.2%				✓
Families below Poverty level With Children <18	2013	20.7%	23.5%	25.0%				✓
Persons below Poverty Level	2013	14.8%	18.9%	19.9%				✓
Median Earnings for Workers	2014	\$28,757	\$26,938	\$26,884				
Births to Unmarried Women	2013	40.6%	42.2	52.5%				
Income inequality	2010-2014	4.7	5.2	5.3				
Single-parent	2015	32.2%	37.3%	41.2%				
Children in single-parent households	2010-2014	34%	38%	44%				
Social associations	2013	9	13					
Population with Limited English Proficiency	2015			4,147				✓
Unemployment	2015	5.0%	5.9%	7.0%				✓
High school graduation	2012-2013	82%	81%	77%				
Bachelor's Degree or Greater	2015	28.9%	22.9%	21.2%				
Murder rate	2014	5	5.7	9.40			✓	
Violent Crime rate	2014	366	427	511			✓	
Forcible Sex Offense Rate	2014	37	41	47			✓	
Aggravated Assault Rate	2014	233	283	320			✓	
Property Crime rate	2014	2,596	3,178	4,006			✓	
Injury Death Rate	2009-2013	60	74	78				

Physical Environment

Indicator	Data Period	Nation	State of Alabama	County Performance	County Trend	Healthy Weight	Mental Health and Substance Abuse	Access to Care
Air pollution - particulate matter	2011	11.4	12.8	13.0				
Driving alone to work	2010-2014	76%	85%	85%				
Long commute - driving alone	2010-2014	31%	33%	33%				
Severe housing problems	2008-2012	19%	15%	18%				

Population Characteristics

Indicator	Data Period	Nation	State of Alabama	Mobile County	County Trend
Percent Households with Children <18	2015	31.6%	33.1%	35.1%	1.1%
Births	2013	12.4	12	13.5	0.2
Disability (Any - 2013)	2015			35,855	
Veteran Population (2013)	2015			33,586	
Median Age	2015	37.9	38.5	37.1	0.5
Female Ages 15-44	2015	19.7%	19.6%	20.1%	(0.4%)
Ages 15-17	2015	4.0%	4.0%	4.2%	(0.3%)
Ages 18-24	2015	9.9%	10.0%	9.8%	(0.2%)
Ages 25-34	2015	13.3%	12.7%	13.2%	0.3%
Ages 35-54	2015	26.3%	25.7%	25.1%	(1.9%)
Ages 55-64	2015	12.7%	13.0%	12.9%	0.8%
Ages 65+	2015	14.7%	15.5%	14.7%	1.8%
Under Age 14	2015	19.1%	19.0%	20.1%	(0.4%)
Asian/Pacific Islander	2015	5.3%	1.3%	2.0%	0.1%
Black Non-Hispanic	2015	12.3%	26.3%	35.3%	0.8%
Hispanic	2015	17.6%	4.4%	2.8%	0.4%

Indicator	Data Period	Nation	State of Alabama	Mobile County	County Trend
Other Non-Hispanic	2015	3.1%	1.3%	2.4%	0.2%
White Non-Hispanic	2015	61.8%	65.9%	57.5%	(1.5%)

Five-Year Population Projections

Indicator	Data Period	Nation	State of Alabama	Mobile County
Projected Five-Year Population Growth	2015	3.5%	1.8%	1.0%
Females Ages 15-44	2015	19.7%	19.6%	19.8%
Median Age	2015	38	39	37
Ages 15-17	2015	4.0%	4.0%	4.2%
Ages 18-24	2015	9.9%	10.0%	9.8%
Ages 25-34	2015	13.3%	12.7%	13.2%
Ages 35-54	2015	26.3%	25.7%	25.1%
Ages 55-64	2015	12.7%	13.0%	12.9%
Ages 65+	2015	14.7%	15.5%	14.7%
Under Age 14	2015	19.1%	19.0%	20.1%
Asian/Pacific Islander	2015	5.3%	1.3%	1.9%
Black	2015	12.3%	26.3%	34.4%
Hispanic	2015	17.6%	4.4%	2.4%
Others	2015	3.1%	1.3%	2.2%
White	2015	61.8%	65.9%	59.1%

Attachment B - Health Status Assessment Surveys and Results



Community Health Survey: Mobile County Health & Social Service Organizations

Every three-five years, Providence Hospital conducts a Health Needs Assessment in our area to provide a snapshot of our health status. Citizen opinion and feedback are a critical part of the process identifying priority issues. We are asking for your input as a service provider in our community to share your unique perspective with the populations you represent and serve.

This survey will take about 5 minutes to complete. This survey is valid through October 23, 2015, so please respond by that date to have your organization's perspective counted.

Paper printed surveys are not being accepted.

Your opinion is important to us. Thank you for taking the time to provide your input.

1. What local geographies do you serve? (you may select multiple primary areas for counties served equally)

	Primary Service Area	Secondary Service Area	Rarely Serve or Do Not Serve
Mobile County	<input type="radio"/>	<input type="radio"/>	<input type="radio"/>
Baldwin County	<input type="radio"/>	<input type="radio"/>	<input type="radio"/>
Clarke County	<input type="radio"/>	<input type="radio"/>	<input type="radio"/>
Escambia County (AL)	<input type="radio"/>	<input type="radio"/>	<input type="radio"/>
George County (MS)	<input type="radio"/>	<input type="radio"/>	<input type="radio"/>
Jackson County (MS)	<input type="radio"/>	<input type="radio"/>	<input type="radio"/>

* 2. What do you think are the most important features of a "Healthy Community"? (Those factors that would most improve the quality of life in this community.) Check only three (3).

- | | |
|---|---|
| <input type="checkbox"/> Access to health services(e.g. family doctor, hospitals) | <input type="checkbox"/> Low numbers of homeless |
| <input type="checkbox"/> Active lifestyles / outdoor activities | <input type="checkbox"/> Low alcohol & drug abuse |
| <input type="checkbox"/> Affordable housing | <input type="checkbox"/> Low crime / safe neighborhoods |
| <input type="checkbox"/> Arts and cultural events | <input type="checkbox"/> Low percent of population that are obese |
| <input type="checkbox"/> Clean environment (clean water, air, etc.) | <input type="checkbox"/> Low numbers of sexually transmitted disease (STDs) |
| <input type="checkbox"/> Family doctors and specialists | <input type="checkbox"/> Low tobacco use |
| <input type="checkbox"/> Good employment opportunities | <input type="checkbox"/> Mental health services |
| <input type="checkbox"/> Good place to raise children | <input type="checkbox"/> Quality education |
| <input type="checkbox"/> Good race relations | <input type="checkbox"/> Quality hospitals and urgent / emergency services |
| <input type="checkbox"/> Good schools | <input type="checkbox"/> Religious or spiritual values |
| <input type="checkbox"/> Good transportation options | <input type="checkbox"/> Social support services (such as Salvation Army, food pantries, Catholic charities, Red Cross, etc.) |
| <input type="checkbox"/> Healthy food options (whole grains, fresh fruits and vegetables) | |

* 3. What do you think are the most important health issues in MOBILE County? (Those problems that have the greatest impact on overall community health.) Check only three (3)

- | | |
|--|---|
| <input type="checkbox"/> Accidental injuries (at work, home, school, farm) | <input type="checkbox"/> Infant death |
| <input type="checkbox"/> Aging problems (e.g. dementia, vision/hearing loss, loss of mobility) | <input type="checkbox"/> Infectious diseases (e.g. hepatitis, TB, etc.) |
| <input type="checkbox"/> Cancers | <input type="checkbox"/> Mental health problems |
| <input type="checkbox"/> Child abuse / neglect | <input type="checkbox"/> Motor vehicle crash injuries |
| <input type="checkbox"/> Dental problems | <input type="checkbox"/> Obesity / Excess weight |
| <input type="checkbox"/> Diabetes | <input type="checkbox"/> Poverty |
| <input type="checkbox"/> Domestic violence | <input type="checkbox"/> Rape / sexual assault |
| <input type="checkbox"/> Drug use/abuse | <input type="checkbox"/> Respiratory / lung disease |
| <input type="checkbox"/> Fire-arm related injuries | <input type="checkbox"/> Sexually Transmitted Diseases (STDs) |
| <input type="checkbox"/> Heart disease and stroke | <input type="checkbox"/> Suicide |
| <input type="checkbox"/> HIV / AIDS | <input type="checkbox"/> Teenage pregnancy |
| <input type="checkbox"/> Homelessness | <input type="checkbox"/> Tobacco use |
| <input type="checkbox"/> Homicide | |

* 4. Which of the following unhealthy behaviors in MOBILE County concern you most? (Those behaviors that have the greatest impact on overall community health.) Check only three (3).

- | | |
|--|--|
| <input type="checkbox"/> Alcohol abuse | <input type="checkbox"/> Not getting shots to prevent disease |
| <input type="checkbox"/> Drug abuse | <input type="checkbox"/> Not using seat belts / child safety seats |
| <input type="checkbox"/> Excess weight | <input type="checkbox"/> Not seeing a doctor or dentist |
| <input type="checkbox"/> Homelessness | <input type="checkbox"/> Tobacco use |
| <input type="checkbox"/> Lack of exercise | <input type="checkbox"/> Unprotected / unsafe sex |
| <input type="checkbox"/> Poor eating habits / poor nutrition | |

5. Overall, how would you rate the health of people who live in MOBILE County?

- | | |
|--|---|
| <input type="radio"/> Very Healthy | <input type="radio"/> Unhealthy |
| <input type="radio"/> Healthy | <input type="radio"/> Very Unhealthy |
| <input type="radio"/> Somewhat Healthy | <input type="radio"/> Not Sure / Don't Know |

6. Based on your knowledge of your clients, which healthcare services do you believe your clients have difficulty obtaining in Mobile County? (Check all answers that apply)

	Difficult to Obtain in MOBILE County	Not Sure / Do Not Know
Alternative therapies (acupuncture, herbals, etc.)	<input type="checkbox"/>	<input type="checkbox"/>
Dental care (including dentures)	<input type="checkbox"/>	<input type="checkbox"/>
Emergency medical care	<input type="checkbox"/>	<input type="checkbox"/>
Hospital care	<input type="checkbox"/>	<input type="checkbox"/>
Laboratory services	<input type="checkbox"/>	<input type="checkbox"/>
Mental Health services	<input type="checkbox"/>	<input type="checkbox"/>
Physical Therapy / Rehabilitation	<input type="checkbox"/>	<input type="checkbox"/>
Preventative healthcare (routine or wellness check-ups, etc.)	<input type="checkbox"/>	<input type="checkbox"/>
Affordable Prescriptions	<input type="checkbox"/>	<input type="checkbox"/>
Primary medical care (a primary doctor/clinic)	<input type="checkbox"/>	<input type="checkbox"/>
Services for the elderly	<input type="checkbox"/>	<input type="checkbox"/>
Specialty medical care (specialist doctors)	<input type="checkbox"/>	<input type="checkbox"/>
Alcohol or drug abuse treatment	<input type="checkbox"/>	<input type="checkbox"/>
Vision care (eye exams and glasses)	<input type="checkbox"/>	<input type="checkbox"/>
X-Rays or mammograms	<input type="checkbox"/>	<input type="checkbox"/>
Do not know / None	<input type="checkbox"/>	<input type="checkbox"/>

7. Overall, how would you rate the quality of healthcare services available to your clients in MOBILE County:

- | | |
|---------------------------------|--|
| <input type="radio"/> Excellent | <input type="radio"/> Fair |
| <input type="radio"/> Very Good | <input type="radio"/> Poor |
| <input type="radio"/> Good | <input type="radio"/> Not sure / do not know |

8. What type of services does your organization provide:

	Primary Service	Secondary Service	Occasional Service	Do Not Offer
Alcohol / Substance Abuse Treatment	<input type="radio"/>	<input type="radio"/>	<input type="radio"/>	<input type="radio"/>
Clothing / Thrift Store	<input type="radio"/>	<input type="radio"/>	<input type="radio"/>	<input type="radio"/>
Disability Services	<input type="radio"/>	<input type="radio"/>	<input type="radio"/>	<input type="radio"/>
Disease Control/Prevention	<input type="radio"/>	<input type="radio"/>	<input type="radio"/>	<input type="radio"/>
Education	<input type="radio"/>	<input type="radio"/>	<input type="radio"/>	<input type="radio"/>
Employment / Job Training	<input type="radio"/>	<input type="radio"/>	<input type="radio"/>	<input type="radio"/>
Environmental Safety	<input type="radio"/>	<input type="radio"/>	<input type="radio"/>	<input type="radio"/>
Faith-based Counseling	<input type="radio"/>	<input type="radio"/>	<input type="radio"/>	<input type="radio"/>
Financial Counseling	<input type="radio"/>	<input type="radio"/>	<input type="radio"/>	<input type="radio"/>
Food Assistance	<input type="radio"/>	<input type="radio"/>	<input type="radio"/>	<input type="radio"/>
Health Care	<input type="radio"/>	<input type="radio"/>	<input type="radio"/>	<input type="radio"/>
Health Education	<input type="radio"/>	<input type="radio"/>	<input type="radio"/>	<input type="radio"/>
Housing / Temporary Shelter	<input type="radio"/>	<input type="radio"/>	<input type="radio"/>	<input type="radio"/>
Legal Aid	<input type="radio"/>	<input type="radio"/>	<input type="radio"/>	<input type="radio"/>
Mental Health	<input type="radio"/>	<input type="radio"/>	<input type="radio"/>	<input type="radio"/>
Pregnancy or Adoption Assistance	<input type="radio"/>	<input type="radio"/>	<input type="radio"/>	<input type="radio"/>
Senior Services	<input type="radio"/>	<input type="radio"/>	<input type="radio"/>	<input type="radio"/>
Utility Payment Assistance	<input type="radio"/>	<input type="radio"/>	<input type="radio"/>	<input type="radio"/>

Other (please specify)

9. Which of the following best describes what happens if your organization cannot provide all the services needed by a client:

- Give the client information on where to obtain assistance (client is responsible for contacting other organization)
- Phone, email or fax a referral to another organization
- Send an electronic referral using a shared software system

Other (please specify)

10. Given the services your organization provides and the clients you serve, how helpful would it be to know what other services the client has received from other organizations?

- Very Helpful
- Somewhat Helpful
- Not Helpful
- Not Sure / Don't Know

11. Do you use any of the following systems to store client records electronically:
Check all that apply

- CareScope
- Bowman Systems (Service Point or Community Point)
- VisionLink (2-1-1 or Community OS)
- Social Solutions (ETO Collaborative)
- An electronic medical record (EMR) or electronic health record (EHR)
- Database program (such as Excel, Access, Lotus)
- Utilize paper system only

Other (please specify)

12. What do you believe is the primary source your clients rely upon for news and community information?

- Television
- Radio
- Daily Newspaper
- Weekly Newspaper
- Social Media (Facebook, Twitter)
- Web
- Word of mouth

Other (please specify)

13. What age group do most of your clients fit into?

	All of Our Clients	Most of Our Clients	Some of Our Clients	A few of Our Clients
Children	<input type="radio"/>	<input type="radio"/>	<input type="radio"/>	<input type="radio"/>
Adults (Under age 65)	<input type="radio"/>	<input type="radio"/>	<input type="radio"/>	<input type="radio"/>
Seniors (65+)	<input type="radio"/>	<input type="radio"/>	<input type="radio"/>	<input type="radio"/>

14. Describe the clients you serve?

	All of Our Clients	Most of Our Clients	Some of Our Clients	A few of Our Clients
Active Duty Military	<input type="radio"/>	<input type="radio"/>	<input type="radio"/>	<input type="radio"/>
Disabled	<input type="radio"/>	<input type="radio"/>	<input type="radio"/>	<input type="radio"/>
Families	<input type="radio"/>	<input type="radio"/>	<input type="radio"/>	<input type="radio"/>
Homeless	<input type="radio"/>	<input type="radio"/>	<input type="radio"/>	<input type="radio"/>
Individuals	<input type="radio"/>	<input type="radio"/>	<input type="radio"/>	<input type="radio"/>
Veterans	<input type="radio"/>	<input type="radio"/>	<input type="radio"/>	<input type="radio"/>

Other (please specify)

15. How many clients (unique individuals, not visits) do you serve on an annual basis?

- 500 or less
- 501 to 1,000
- 1,001 to 5,000
- 5,001 to 10,000
- 10,001 to 20,000
- 20,000 or more

16. Do your clients have to meet income eligibility requirements to obtain services?

- Yes, 50% of poverty or less
- Yes, 100% of poverty or less
- Yes, 150% of poverty or less
- Yes, 200% of poverty or less
- Yes, 300% of poverty or less
- No, we serve everyone

Other (please specify)

17. How many staff (employed, contract, or volunteers) do you have?

- 10 or Less
- 11 to 20
- 21 to 100
- 101 to 500
- More than 500

18. What percent of your staff is volunteer?

- 10% or Less
- 11% to 25%
- 26% to 50%
- 51% to 75%
- More than 75%

19. Which of the following most closely describes your contact with your organization's clients/members?

Seldom or Never	Sometimes	Frequently
<input type="radio"/>	<input type="radio"/>	<input type="radio"/>

Thank you for taking this survey.

Health & Social Services, Mobile County - Community Health Survey

1. What local geographies do you serve? (you may select multiple primary areas for counties served equally)

Answer Options	Primary Service Area	Secondary Service Area	Rarely Serve or Do Not Serve	Response Count
Mobile County	58	-	-	58
Baldwin County	20	18	3	41
Clarke County	12	13	11	36
Escambia County (AL)	11	11	14	36
George County (MS)	4	9	17	30
Jackson County (MS)	3	9	18	30
<i>answered question</i>				58
<i>skipped question</i>				0

2. What do you think are the most important features of a "Healthy Community"? (Those factors that would most improve the quality of life in this community.) Check only three (3).

Answer Options	Response Percent	Response Count
Access to health services(e.g. family doctor, hospitals)	50.0%	29
Good employment opportunities	36.2%	21
Mental health services	36.2%	21
Quality education	25.9%	15
Affordable housing	22.4%	13
Social support services (such as Salvation Army, food pantries, Catholic charities, Red Cross, etc.)	20.7%	12
Low crime / safe neighborhoods	19.0%	11
Good transportation options	13.8%	8
Healthy food options (whole grains, fresh fruits and vegetables)	12.1%	7
Religious or spiritual values	12.1%	7
Good schools	10.3%	6
Quality hospitals and urgent / emergency services	8.6%	5
Active lifestyles / outdoor activities	5.2%	3
Good place to raise children	5.2%	3
Good race relations	5.2%	3
Clean environment (clean water, air, etc.)	3.4%	2
Low numbers of homeless	3.4%	2
Low alcohol & drug abuse	3.4%	2
Arts and cultural events	1.7%	1
Family doctors and specialists	1.7%	1
Low percent of population that are obese	1.7%	1
Low numbers of sexually transmitted disease (STDs)	1.7%	1
<i>answered question</i>		58
<i>skipped question</i>		0

3. What do you think are the most important health issues in MOBILE County? (Those problems that have the greatest impact on overall community health.) Check only three (3)

Answer Options	Response Percent	Response Count
Mental health problems	56.9%	33
Obesity / Excess weight	39.7%	23
Poverty	39.7%	23
Drug use/abuse	31.0%	18
Diabetes	24.1%	14
Homelessness	15.5%	9
Heart disease and stroke	13.8%	8
Cancers	12.1%	7
Aging problems (e.g. dementia, vision/hearing loss, loss of mobility)	10.3%	6
Child abuse / neglect	10.3%	6
Dental problems	6.9%	4
HIV / AIDS	6.9%	4
Rape / sexual assault	6.9%	4
Teenage pregnancy	6.9%	4
Domestic violence	5.2%	3
Homicide	5.2%	3
Tobacco use	5.2%	3
Fire-arm related injuries	1.7%	1
Suicide	1.7%	1
<i>answered question</i>		58
<i>skipped question</i>		0

4. Which of the following unhealthy behaviors in MOBILE County concern you most? (Those behaviors that have the greatest impact on overall community health.)
Check only three (3).

Answer Options	Response Percent	Response Count
Drug abuse	51.7%	30
Poor eating habits / poor nutrition	50.0%	29
Not seeing a doctor or dentist	39.7%	23
Homelessness	32.8%	19
Unprotected / unsafe sex	22.4%	13
Excess weight	20.7%	12
Tobacco use	20.7%	12
Lack of exercise	17.2%	10
Alcohol abuse	15.5%	9
Not using seat belts / child safety seats	6.9%	4
Not getting shots to prevent disease	5.2%	3
<i>answered question</i>		58
<i>skipped question</i>		0

5. Overall, how would you rate the health of people who live in MOBILE County?

Answer Options	Response Percent	Response Count
Very Healthy	-	-
Healthy	-	-
Somewhat Healthy	36.2%	21
Unhealthy	48.3%	28
Very Unhealthy	6.9%	4
Not Sure / Don't Know	8.6%	5
<i>answered question</i>		58
<i>skipped question</i>		0

6. Based on your knowledge of your clients, which healthcare services do you believe your clients have difficulty obtaining in Mobile County? (Check all answers that apply)

Answer Options	Response Percent	Response Count	Not Sure / Do Not Know
Mental Health services	79%	45	3
Dental care (including dentures)	63%	36	5
Alcohol or drug abuse treatment	58%	33	4
Preventative healthcare (routine or wellness check-ups, etc.)	54%	31	6
Affordable Prescriptions	54%	31	5
Services for the elderly	47%	27	5
Vision care (eye exams and glasses)	40%	23	5
Primary medical care (a primary doctor/clinic)	35%	20	4
Specialty medical care (specialist doctors)	33%	19	8
Alternative therapies (acupuncture, herbals, etc.)	25%	14	25
X-Rays or mammograms	23%	13	10
Emergency medical care	21%	12	7
Hospital care	21%	12	7
Physical Therapy / Rehabilitation	21%	12	10
Laboratory services	12%	7	10
Do not know / None	4%	2	3
<i>answered question</i>		57	
<i>skipped question</i>		1	

7. Overall, how would you rate the quality of healthcare services available to your clients in MOBILE County:

Answer Options	Response Percent	Response Count
Excellent	1.8%	1
Very Good	12.3%	7
Good	28.1%	16
Fair	45.6%	26
Poor	12.3%	7
Not sure / do not know	0.0%	0
<i>answered question</i>		57
<i>skipped question</i>		1

8. What type of services does your organization provide:

Answer Options	Primary Service	Secondary Service	Occasional Service	Do Not Offer	Response Count
Education	22	12	10	2	46
Health Education	17	11	5	5	38
Health Care	15	5	3	10	33
Disease Control/Prevention	11	7	3	14	35
Food Assistance	7	8	8	12	35
Mental Health	7	11	7	11	36
Disability Services	6	6	9	15	36
Utility Payment Assistance	6	4	6	18	34
Employment / Job Training	5	6	5	19	35
Housing / Temporary Shelter	5	3	6	22	36
Senior Services	5	7	4	20	36
Financial Counseling	4	6	14	13	37
Pregnancy or Adoption Assistance	4	3	5	21	33
Environmental Safety	3	4	4	20	31
Faith-based Counseling	3	5	6	19	33
Alcohol / Substance Abuse Treatment	2	4	4	25	35
Clothing / Thrift Store	1	5	10	20	36
Legal Aid	-	1	5	24	30
Other (please specify)					
<i>We provide a Senior Center with hot lunches and activities.</i>					
<i>School Readiness Program at No Charge</i>					
<i>Prescription Assistance Program for patients</i>					
<i>Food bank</i>					
<i>Case Management</i>					
<i>Care Coordination. Link patients to community resources</i>					
<i>We do care coordination to connect these services to our patients</i>					
<i>Youth leadership</i>					
<i>Prevention services</i>					
<i>residential care of children, education</i>					
<i>Medication for chronic illnesses</i>					
<i>Essential social services for people living with HIV/AIDS including housing assistance & referrals</i>					
<i>Nutrition Education, SNAP Outreach, Gardens</i>					
<i>Residential services for children and adolescents with developmental disabilities</i>					
<i>Epilepsy and seizures</i>					
<i>Residential Facility for adults with disabilities</i>					
<i>Crisis Services - Suicide Prevention & Intervention, Rape Crisis Center, Homicide Services; Housing Counseling; United Way 2-1-1 Resource Line</i>					
<i>Early Intervention; Sign Language Interpreting; Adaptive technology training</i>					
<i>Credit/Debt counseling; Housing counseling to include pre-purchase, rent/mortgage delinquency, reverse mortgage, foreclosure prevention</i>					
answered question					54
skipped question					4

9. Which of the following best describes what happens if your organization cannot provide all the services needed by a client:

Answer Options	Response Percent	Response Count
Give the client information on where to obtain assistance (client is responsible for contacting other organization)	54.7%	29
Phone, email or fax a referral to another organization	35.8%	19
Send an electronic referral using a shared software system	9.4%	5
Other (please specify)	8	8
<i>We also will go over and beyond to provide proper assistance by letting patients know about community resources that may assist them. In addition, depending upon the situation, we do referrals as well.</i>		
<i>We are a free pharmacy so the access to free medication are limited.</i>		
<i>Only with Release of Information - otherwise client is given information to obtain assistance</i>		
<i>Prepare an individualize plan of action to stabilize and help the person with epilepsy achieve independent living. We contact resources to be sure it is a match then connect client with resource.</i>		
<i>We do the first two.</i>		
<i>All of the above - depending on need.</i>		
<i>Work with "client" to find the best possible resources for the needs identified.</i>		
<i>If our staff feels the client needs assistance with a referral, they will make a call with the client in the office to facilitate the referral.</i>		
answered question		53
skipped question		5

10. Given the services your organization provides and the clients you serve, how helpful would it be to know what other services the client has received from other organizations?

Answer Options	Response Percent	Response Count
Very Helpful	77.6%	45
Somewhat Helpful	20.7%	12
Not Helpful	0.0%	0
Not Sure / Don't Know	1.7%	1
answered question		58
skipped question		0

11. Do you use any of the following systems to store client records electronically: Check all that apply

Answer Options	Response Percent	Response Count
Database program (such as Excel, Access, Lotus)	59.0%	23
An electronic medical record (EMR) or electronic health record (EHR)	35.9%	14
Utilize paper system only	20.5%	8
Bowman Systems (Service Point or Community Point)	7.7%	3
VisionLink (2-1-1 or Community OS)	2.6%	1
CareScope	-	-
Social Solutions (ETO Collaborative)	-	-
Other (please specify)	14	14
<i>ChildPlus for our Head Start program FactPro dor our Community Services program</i>		
<i>ChildPlus Software</i>		
<i>ChildPlus</i>		
<i>RMEDE</i>		
<i>Data base provided by AL Medicaid</i>		
<i>My Senior Center program</i>		
<i>We used RX 30, MedData, and Mirixa</i>		
<i>CAREWare (HRSA)</i>		
<i>Child Plus and TS GOLD</i>		
<i>Meresys</i>		
<i>We also have a paper system.</i>		
<i>Specified confidential database</i>		
<i>Cooperative Processing Resources database - for credit and housing counseling providers</i>		
<i>Combination of paper and internal programs</i>		
answered question		39
skipped question		19

12. What do you believe is the primary source your clients rely upon for news and community information?

Answer Options	Response Percent	Response Count
Word of mouth	44.8%	26
Television	39.7%	23
Social Media (Facebook, Twitter)	12.1%	7
Web	3.4%	2
Radio	-	-
Daily Newspaper	-	-
Weekly Newspaper	-	-
Other (please specify)	1	1
<i>Word of mouth, also</i>		
answered question		58
skipped question		0

13. What age group do most of your clients fit into?

Answer Options	All of Our Clients	Most of Our Clients	Some of Our Clients	A few of Our Clients	Response Count
Children	10	9	16	9	44
Adults (Under age 65)	6	37	11	-	54
Seniors (65+)	4	14	19	7	44
answered question					58
skipped question					0

14. Describe the clients you serve?

Answer Options	All of Our Clients	Most of Our Clients	Some of Our Clients	A few of Our Clients	Response Count
Active Duty Military	-	-	8	22	30
Disabled	6	10	27	8	51
Families	12	22	13	2	49
Homeless	2	2	26	14	44
Individuals	18	20	11	1	50
Veterans	-	2	30	9	41
Other (please specify)				4	4
<i>All covered by Patient First Medicaid</i>					
<i>All clients are below the federal poverty line</i>					
<i>Children and adolescents with developmental disabilities, including autism</i>					
<i>Low income, uninsured adults</i>					
answered question					57
skipped question					1

15. How many clients (unique individuals, not visits) do you serve on an annual basis?

Answer Options	Response Percent	Response Count
500 or less	33.3%	19
501 to 1,000	10.5%	6
1,001 to 5,000	22.8%	13
5,001 to 10,000	7.0%	4
10,001 to 20,000	5.3%	3
20,000 or more	21.1%	12
<i>answered question</i>		57
<i>skipped question</i>		1

16. Do your clients have to meet income eligibility requirements to obtain services?

Answer Options	Response Percent	Response Count
Yes, 50% of poverty or less	5.7%	3
Yes, 100% of poverty or less	9.4%	5
Yes, 150% of poverty or less	5.7%	3
Yes, 200% of poverty or less	3.8%	2
Yes, 300% of poverty or less	5.7%	3
No, we serve everyone	69.8%	37
Other (please specify)	8	8
<i>Medicaid patients</i>		
<i>Medicaid Eligibility</i>		
<i>Must have Patient First AL Medicaid</i>		
<i>Unless unrestricted funding is available and emergency circumstances can be documented.</i>		
<i>Unless they are categorically eligible (homeless, TANF recipients, public assistance, Foster Care/Protective Service)</i>		
<i>Many clients self report.</i>		
<i>They must be identified on the government poverty scale to receive services.</i>		
<i>Specific services use either a sliding fee scale, a flat rate, or are covered by grants. Fees are based on gross household income and can be waived (150% of poverty) or reduced based on need.</i>		
<i>answered question</i>		53
<i>skipped question</i>		5

17. How many staff (employed, contract, or volunteers) do you have?

Answer Options	Response Percent	Response Count
10 or Less	21.1%	12
11 to 20	10.5%	6
21 to 100	40.4%	23
101 to 500	12.3%	7
More than 500	15.8%	9
<i>answered question</i>		57
<i>skipped question</i>		1

18. What percent of your staff is volunteer?

Answer Options	Response Percent	Response Count
10% or Less	76.8%	43
11% to 25%	5.4%	3
26% to 50%	3.6%	2
51% to 75%	8.9%	5
More than 75%	5.4%	3
<i>answered question</i>		56
<i>skipped question</i>		2

19. Which of the following most closely describes your contact with your organization's clients/members?

Answer Options	Response Percent	Response Count
Seldom or Never	5.2%	3
Sometimes	13.8%	8
Frequently	81.0%	47
<i>answered question</i>		58
<i>skipped question</i>		0

Community Health Survey - Mobile County



The purpose of the following survey is to get your opinions about community health issues in Mobile County. Providence Hospital will use the results of this survey to identify health priorities for community action.

This survey will take about 5-10 minutes to complete. Your opinion is important. This survey is valid through October 30, 2015, so please respond by that date to have your opinions counted.

Thank you for taking the time to provide your input.

1. What do you think are the most important features of a “Healthy Community”? (Those factors that would most improve the quality of life in this community.) Check only three (3).

- | | |
|--|---|
| <input type="checkbox"/> Access to health services(e.g. family doctor, hospitals) | <input type="checkbox"/> Low alcohol & drug abuse |
| <input type="checkbox"/> Active lifestyles / outdoor activities | <input type="checkbox"/> Low crime / safe neighborhoods |
| <input type="checkbox"/> Affordable housing | <input type="checkbox"/> Low percent of population that are obese |
| <input type="checkbox"/> Arts and cultural events | <input type="checkbox"/> Low numbers of sexually transmitted disease (STDs) |
| <input type="checkbox"/> Clean environment (clean water, air, etc.) | <input type="checkbox"/> Low tobacco use |
| <input type="checkbox"/> Family doctors and specialists | <input type="checkbox"/> Mental health services |
| <input type="checkbox"/> Good employment opportunities | <input type="checkbox"/> Quality education |
| <input type="checkbox"/> Good place to raise children | <input type="checkbox"/> Quality hospitals and urgent / emergency services |
| <input type="checkbox"/> Good race relations | <input type="checkbox"/> Good transportation options |
| <input type="checkbox"/> Good schools | <input type="checkbox"/> Religious or spiritual values |
| <input type="checkbox"/> Healthy food options | <input type="checkbox"/> Social support services (such as Salvation Army, food pantries, Catholic charities, Red Cross, etc.) |
| <input type="checkbox"/> Low numbers of homeless | |

Community Health Survey - Mobile County

2. What do you think are the most important health issues in Mobile County? (Those problems that have the greatest impact on overall community health.) Check only three (3).

- | | |
|--|---|
| <input type="checkbox"/> Accidental injuries (at work, home, school, farm) | <input type="checkbox"/> Homicide |
| <input type="checkbox"/> Aging problems (e.g. dementia, vision/hearing loss, loss of mobility) | <input type="checkbox"/> Infant death |
| <input type="checkbox"/> Cancers | <input type="checkbox"/> Infectious diseases (e.g. hepatitis, TB, etc.) |
| <input type="checkbox"/> Child abuse / neglect | <input type="checkbox"/> Mental health problems |
| <input type="checkbox"/> Dental problems | <input type="checkbox"/> Motor vehicle crash injuries |
| <input type="checkbox"/> Diabetes | <input type="checkbox"/> Obesity / Excess weight |
| <input type="checkbox"/> Domestic violence | <input type="checkbox"/> Rape / sexual assault |
| <input type="checkbox"/> Drug use / abuse | <input type="checkbox"/> Respiratory / lung disease |
| <input type="checkbox"/> Fire-arm related injuries | <input type="checkbox"/> Sexually Transmitted Diseases (STDs) |
| <input type="checkbox"/> Heart disease and stroke | <input type="checkbox"/> Suicide |
| <input type="checkbox"/> HIV / AIDS | <input type="checkbox"/> Teenage pregnancy |
| <input type="checkbox"/> Homelessness | <input type="checkbox"/> Tobacco use |

3. Which of the following unhealthy behaviors in Mobile County concern you the most? (Those behaviors that have the greatest impact on overall community health.) Check only three (3).

- | | |
|--|--|
| <input type="checkbox"/> Alcohol abuse | <input type="checkbox"/> Not getting shots to prevent disease |
| <input type="checkbox"/> Drug abuse | <input type="checkbox"/> Not using seat belts / child safety seats |
| <input type="checkbox"/> Excess weight | <input type="checkbox"/> Not seeing a doctor or dentist |
| <input type="checkbox"/> Homelessness | <input type="checkbox"/> Tobacco use |
| <input type="checkbox"/> Lack of exercise | <input type="checkbox"/> Unprotected / unsafe sex |
| <input type="checkbox"/> Poor eating habits / poor nutrition | |

4. Overall, how would you rate the health of people who live in Mobile County?

- Very Healthy Healthy Somewhat Healthy Unhealthy Very Unhealthy

Community Health Survey - Mobile County

5. Have you ever been told by a health professional that you have any of the following: (Check all that apply)

- | | |
|---|--|
| <input type="checkbox"/> Alcohol or drug addiction | <input type="checkbox"/> High cholesterol |
| <input type="checkbox"/> Asthma | <input type="checkbox"/> High blood pressure |
| <input type="checkbox"/> Chronic Obstructive Pulmonary Disease (COPD) | <input type="checkbox"/> HIV / AIDS |
| <input type="checkbox"/> Dementia / Alzheimer's disease | <input type="checkbox"/> Mental health problem |
| <input type="checkbox"/> Depression | <input type="checkbox"/> Obesity |
| <input type="checkbox"/> Diabetes | <input type="checkbox"/> Tuberculosis (TB) |
| <input type="checkbox"/> Heart disease | <input type="checkbox"/> None of the above |

6. What is the primary source of your health care insurance coverage?

- | | |
|---|--|
| <input type="radio"/> Insurance from an employer or union | <input type="radio"/> Medicaid |
| <input type="radio"/> Insurance that you pay for yourself, including Affordable Care Act (sometimes called "Obamacare") plans | <input type="radio"/> TRICARE, military or VA benefits |
| <input type="radio"/> Indian or Tribal Health Services | <input type="radio"/> Other |
| <input type="radio"/> Medicare | <input type="radio"/> I do not have any health insurance |

7. How long has it been since your last dental exam or cleaning?

- Within past 12 months 1 to 2 years ago 2 to 5 years ago 5 or more years ago Do not know / Not sure

8. How long has it been since your last visit to a doctor for a wellness exam or routine check-up? *(Does not include an exam for a specific injury, illness or condition)*

- Within past 12 months 1 to 2 years ago 2 to 5 years ago 5 or more years ago Do not know / Not sure

9. When a doctor prescribes medicine for you or a family member, what do you do? (Check all that apply)

- | | |
|--|--|
| <input type="checkbox"/> Fill the prescription at a pharmacy | <input type="checkbox"/> Use someone else's medicine |
| <input type="checkbox"/> Use leftover medicine already at home | <input type="checkbox"/> Use herbal or natural therapies instead |
| <input type="checkbox"/> Buy an over the counter medicine | <input type="checkbox"/> Go without medicine |

Community Health Survey - Mobile County

10. Which healthcare services are difficult to get in Mobile County? (Check all answers that apply)

- | | |
|--|---|
| <input type="checkbox"/> Alternative therapies (acupuncture, herbals, etc.) | <input type="checkbox"/> Primary medical care (a primary doctor/clinic) |
| <input type="checkbox"/> Dental care including dentures | <input type="checkbox"/> Services for the elderly |
| <input type="checkbox"/> Emergency medical care | <input type="checkbox"/> Specialty medical care (specialist doctors) |
| <input type="checkbox"/> Hospital care | <input type="checkbox"/> Alcohol or drug abuse treatment |
| <input type="checkbox"/> Laboratory services | <input type="checkbox"/> Vision care (eye exams and glasses) |
| <input type="checkbox"/> Mental Health services | <input type="checkbox"/> Women's Health |
| <input type="checkbox"/> Physical Therapy / Rehabilitation | <input type="checkbox"/> X-Rays or mammograms |
| <input type="checkbox"/> Preventative healthcare (routine or wellness check-ups, etc.) | <input type="checkbox"/> Do not know / None |
| <input type="checkbox"/> Prescriptions / Pharmacy services | |

11. In the past 12 months, did you delay getting needed medical care for any of the following reasons? Check all answers that apply.

- | | |
|---|---|
| <input type="checkbox"/> Could not afford | <input type="checkbox"/> Provider was not taking new patients |
| <input type="checkbox"/> Insurance problems or lack of insurance | <input type="checkbox"/> Could not get an appointment soon enough |
| <input type="checkbox"/> Lack of transportation | <input type="checkbox"/> Could not get a weekend or evening appointment |
| <input type="checkbox"/> Language barriers or could not communicate | <input type="checkbox"/> No, I did not have a delay in getting care |
| <input type="checkbox"/> Provider did not take your insurance | <input type="checkbox"/> No, I did not need medical care |

12. When you or someone in your family is sick, where do you go for healthcare?

- | | |
|---|---|
| <input type="radio"/> Hospital Emergency Room | <input type="radio"/> Community health center |
| <input type="radio"/> My family doctor | <input type="radio"/> Free clinic |
| <input type="radio"/> Any available doctor | <input type="radio"/> VA / Military facility |
| <input type="radio"/> Urgent care clinic | <input type="radio"/> I usually go without care |
| <input type="radio"/> Health Department | |

Community Health Survey - Mobile County

13. If you felt that you or someone in your family needed mental health services, where would you go for care?

- | | |
|--|--|
| <input type="radio"/> Hospital Emergency Room in Mobile County | <input type="radio"/> Mental health clinic in Mobile County |
| <input type="radio"/> Hospital Emergency Room in another county | <input type="radio"/> Mental health clinic in another county |
| <input type="radio"/> My family doctor | <input type="radio"/> VA / Military facility |
| <input type="radio"/> Private psychologist, psychiatrist or other mental health professional | <input type="radio"/> I do not know where to go for mental health care |

Other (please specify)

14. Overall, how would you rate the quality of healthcare services available in Mobile County?

- Excellent Very Good Good Fair Poor Not sure / do not know

15. Do you currently use any tobacco products?

- | | |
|---|--|
| <input type="radio"/> Yes, I currently smoke cigarettes or cigars | <input type="radio"/> No, I quit 12 months ago or less |
| <input type="radio"/> Yes, I currently use chewing tobacco, snuff or snus | <input type="radio"/> No, I quit 1 or more years ago |
| <input type="radio"/> Yes I currently use e-cigarettes | <input type="radio"/> No, I have never used tobacco products |

16. How would you rate your own health today?

- Very Healthy Healthy Somewhat Healthy Unhealthy Very Unhealthy

17. Please indicate how strongly you agree or disagree with the following statement as it applies to you personally: I am confident that I can make and maintain lifestyle changes, like eating right, exercising, or not smoking.

- Strongly Agree Agree Disagree Strongly Disagree

18. What are the top three (3) reasons that prevent you from eating healthier foods and being active? Check only three.

- | | |
|---|---|
| <input type="checkbox"/> Do not know how to change my diet | <input type="checkbox"/> Do not want to be more active |
| <input type="checkbox"/> Do not know how much more active I need to be | <input type="checkbox"/> It is not safe to exercise in my neighborhood |
| <input type="checkbox"/> Fear of failure | <input type="checkbox"/> It is too expensive to cook / eat healthy foods |
| <input type="checkbox"/> Tried before and failed to change | <input type="checkbox"/> Do not have time to be more active |
| <input type="checkbox"/> Healthier food is not available in my neighborhood | <input type="checkbox"/> Do not have time to cook or shop for healthy foods |
| <input type="checkbox"/> Cannot afford exercise equipment / gym membership | <input type="checkbox"/> I am happy the way I am |
| <input type="checkbox"/> Do not want to change what I eat | <input type="checkbox"/> I already eat healthy and am active |

Community Health Survey - Mobile County

*** 19. What is the zip code where you live?**

20. Are you male or female?

- Male
- Female

21. What is your race?

- Black/African-American, non-Hispanic
- Black/African-American, Hispanic
- White/Caucasian, non-Hispanic
- White/Caucasian, Hispanic
- Asian
- American Indian / Alaska Native
- Pacific Islander
- Bi-racial or multiple races

22. What is your age?

- Less than 18
- 18-24
- 25-34
- 35-44
- 45-54
- 55-74
- 75+

23. What is the highest level of school you have completed or highest degree you have received?

- Grades 1 through 8
- Some high school (grades 9 through 11)
- High school diploma / GED
- Vocational/Tech School
- Some college
- 2-year college degree
- 4-year college degree
- Graduate or professional degree

24. What is your current employment status?

- Disabled / unable to work
- Employed full-time
- Employed part-time
- Homemaker
- Retired
- Seasonal worker
- Student
- Self-employed
- Unemployed

Community Health Survey - Mobile County

25. What is your annual family income?

- Less than \$15,000/year
- \$15,001 - \$25,000/year
- \$25,001 - \$35,000/year
- \$35,001 - \$50,000/year
- \$50,001 - \$75,000/year
- \$75,001 - \$100,000/year
- \$100,001 or more/year

26. Where did you take this survey?

- A church
- A Health Fair
- Health Clinic
- Senior Center
- Providence Hospital

Other (please specify)

Thank you for taking this survey.

Mobile County Community Health Survey - responses to date (1/22/16)

	Online Survey		Paper Survey		All Responses	
1. What do you think are the most important features of a "Healthy Community"? (Those factors that would most improve the quality of life in this community.) Check only three (3).						
Access to health services(e.g. family	51.2%	106	60.7%	71	54.6%	177
Good employment opportunities	32.9%	68	29.9%	35	31.8%	103
Low crime / safe neighborhoods	29.5%	61	20.5%	24	26.2%	85
Active lifestyles / outdoor activities	27.5%	57	17.9%	21	24.1%	78
Religious or spiritual values	22.7%	47	20.5%	24	21.9%	71
Clean environment (clean water, air, etc.)	22.2%	46	20.5%	24	21.6%	70
Affordable housing	15.5%	32	29.1%	34	20.4%	66
Mental health services	20.8%	43	15.4%	18	18.8%	61
Quality education	19.3%	40	12.0%	14	16.7%	54
Quality hospitals and urgent / emergency	15.5%	32	18.8%	22	16.7%	54
Healthy food options	16.9%	35	14.5%	17	16.0%	52
Social support services (such as Salvation	15.9%	33	13.7%	16	15.1%	49
Low alcohol & drug abuse	11.6%	24	14.5%	17	12.7%	41
Good schools	10.1%	21	16.2%	19	12.3%	40
Good transportation options	6.8%	14	22.2%	26	12.3%	40
Good place to raise children	9.2%	19	10.3%	12	9.6%	31
Low numbers of homeless	7.7%	16	9.4%	11	8.3%	27
Family doctors and specialists	5.3%	11	11.1%	13	7.4%	24
Low percent of population that are obese	8.2%	17	3.4%	4	6.5%	21
Good race relations	4.3%	9	9.4%	11	6.2%	20
Low tobacco use	5.3%	11	5.1%	6	5.2%	17
Low numbers of sexually transmitted	3.9%	8	4.3%	5	4.0%	13
Arts and cultural events	1.0%	2	5.1%	6	2.5%	8
<i>answered question</i>	207	207	117	117		324
<i>skipped question</i>	0	0	1	1		1

	Online Survey		Paper Survey		All Responses	
2. What do you think are the most important health issues in Mobile County? (Those problems that have the greatest impact on overall community health.) Check only three (3).						
Obesity / Excess weight	46.1%	95	25.2%	29	38.6%	124
Drug use / abuse	36.4%	75	33.9%	39	35.5%	114
Mental health problems	32.0%	66	26.1%	30	29.9%	96
Aging problems (e.g. dementia,	25.7%	53	17.4%	20	22.7%	73
Heart disease and stroke	25.7%	53	15.7%	18	22.1%	71
Cancers	20.9%	43	23.5%	27	21.8%	70
Diabetes	23.3%	48	17.4%	20	21.2%	68
Homelessness	15.5%	32	27.8%	32	19.9%	64
Child abuse / neglect	11.7%	24	20.9%	24	15.0%	48
Domestic violence	9.2%	19	20.0%	23	13.1%	42
Tobacco use	12.6%	26	7.8%	9	10.9%	35
Teenage pregnancy	9.2%	19	7.0%	8	8.4%	27
Homicide	10.2%	21	5.2%	6	8.4%	27
Dental problems	2.9%	6	13.0%	15	6.5%	21
Sexually Transmitted Diseases (STDs)	5.3%	11	8.7%	10	6.5%	21
Respiratory / lung disease	7.3%	15	4.3%	5	6.2%	20
HIV / AIDS	6.8%	14	4.3%	5	5.9%	19
Motor vehicle crash injuries	4.9%	10	6.1%	7	5.3%	17
Accidental injuries (at work, home, school,	3.4%	7	7.0%	8	4.7%	15
Infectious diseases (e.g. hepatitis, TB, etc.)	5.3%	11	2.6%	3	4.4%	14
Fire-arm related injuries	3.4%	7	3.5%	4	3.4%	11
Suicide	1.9%	4	3.5%	4	2.5%	8
Rape / sexual assault	1.5%	3	2.6%	3	1.9%	6
Infant death	0.5%	1	0.9%	1	0.6%	2
<i>answered question</i>	206	206	115	115		321
<i>skipped question</i>	1	1	3	3		

Mobile County Community Health Survey - responses to date (1/22/16)

	Online Survey		Paper Survey		All Responses	
3. Which of the following unhealthy behaviors in Mobile County concern you the most? (Those behaviors that have the greatest impact on overall community health.) Check only three (3).						
Drug abuse	52.9%	109	61.1%	69	55.8%	178
Poor eating habits / poor nutrition	46.6%	96	38.9%	44	43.9%	140
Excess weight	46.1%	95	23.0%	26	37.9%	121
Alcohol abuse	29.1%	60	44.2%	50	34.5%	110
Not seeing a doctor or dentist	21.8%	45	29.2%	33	24.5%	78
Lack of exercise	28.6%	59	15.9%	18	24.1%	77
Homelessness	19.4%	40	27.4%	31	22.3%	71
Tobacco use	22.3%	46	11.5%	13	18.5%	59
Unprotected / unsafe sex	12.6%	26	15.9%	18	13.8%	44
Not getting shots to prevent disease	13.1%	27	12.4%	14	12.9%	41
Not using seat belts / child safety seats	7.8%	16	8.8%	10	8.2%	26
<i>answered question</i>	206	206	113	113		319
<i>skipped question</i>	1	1	5	5		

4. Overall, how would you rate the health of people who live in Mobile County?						
Very Healthy	0.0%	0	0.0%	0	0.0%	0
Healthy	2.9%	6	6.3%	7	4.1%	13
Somewhat Healthy	48.3%	99	49.5%	55	48.7%	154
Unhealthy	45.9%	94	41.4%	46	44.3%	140
Very Unhealthy	2.9%	6	2.7%	3	2.8%	9
<i>answered question</i>	205	205	111	111		316
<i>skipped question</i>	2	2	7	7		

5. Have you ever been told by a health professional that you have any of the following: (Check all that apply)						
Alcohol or drug addiction	0.0%	0	6.2%	7	2.2%	7
Asthma	13.2%	27	14.2%	16	13.5%	43
Chronic Obstructive Pulmonary Disease	1.0%	2	9.7%	11	4.1%	13
Dementia / Alzheimer's disease	0.0%	0	1.8%	2	0.6%	2
Depression	13.2%	27	34.5%	39	20.8%	66
Diabetes	7.3%	15	20.4%	23	11.9%	38
Heart disease	2.4%	5	14.2%	16	6.6%	21
High cholesterol	22.4%	46	28.3%	32	24.5%	78
High blood pressure	27.3%	56	44.2%	50	33.3%	106
HIV / AIDS	0.0%	0	0.0%	0	0.0%	0
Mental health problem	2.0%	4	14.2%	16	6.3%	20
Obesity	19.0%	39	13.3%	15	17.0%	54
Tuberculosis (TB)	0.0%	0	0.9%	1	0.3%	1
None of the above	43.9%	90	22.1%	25	36.2%	115
<i>answered question</i>	205	205	113	113		318
<i>skipped question</i>	2	2	5	5		

6. What is the primary source of your health care insurance coverage?						
Insurance from an employer or union	81.3%	165	23.0%	26	60.4%	191
Insurance that you pay for yourself,	4.9%	10	6.2%	7	5.4%	17
Indian or Tribal Health Services	0.0%	0	0.0%	0	0.0%	0
Medicare	3.9%	8	17.7%	20	8.9%	28
Medicaid	1.0%	2	16.8%	19	6.6%	21
TRICARE, military or VA benefits	4.4%	9	0.9%	1	3.2%	10
Other	3.4%	7	8.0%	9	5.1%	16
I do not have any health insurance	1.0%	2	27.4%	31	10.4%	33
<i>answered question</i>	203	203	113	113		316
<i>skipped question</i>	4	4	5	5		

7. How long has it been since your last dental exam or cleaning?						
Within past 12 months	79.5%	163	31.3%	35	62.5%	198
1 to 2 years ago	7.8%	16	18.8%	21	11.7%	37
2 to 5 years ago	6.8%	14	15.2%	17	9.8%	31
5 or more years ago	4.9%	10	13.4%	15	7.9%	25
Do not know / Not sure	1.0%	2	21.4%	24	8.2%	26
<i>answered question</i>	205	205	112	112		317
<i>skipped question</i>	2	2	6	6		

Mobile County Community Health Survey - responses to date (1/22/16)

Online Survey

Paper Survey

All Responses

8. How long has it been since your last visit to a doctor for a wellness exam or routine check-up? (Does not include an exam for a specific injury, illness or condition)

Within past 12 months	81.6%	168	70.7%	82	77.6%	250
1 to 2 years ago	8.3%	17	12.1%	14	9.6%	31
2 to 5 years ago	4.4%	9	8.6%	10	5.9%	19
5 or more years ago	3.9%	8	0.9%	1	2.8%	9
Do not know / Not sure	1.9%	4	7.8%	9	4.0%	13
answered question		206		116		322
skipped question		1		2		

9. When a doctor prescribes medicine for you or a family member, what do you do? (Check all that apply)

Fill the prescription at a pharmacy	97.6%	202	86.3%	101	93.5%	303
Use leftover medicine already at home	6.3%	13	11.1%	13	8.0%	26
Buy an over the counter medicine	7.2%	15	11.1%	13	8.6%	28
Use someone else's medicine	0.5%	1	6.8%	8	2.8%	9
Use herbal or natural therapies instead	3.9%	8	6.0%	7	4.6%	15
Go without medicine	2.9%	6	14.5%	17	7.1%	23
answered question		207		117		324
skipped question		0		1		

10. Which healthcare services are difficult to get in Mobile County? (Check all answers that apply)

Alternative therapies (acupuncture,	20.6%	42	17.0%	19	19.3%	61
Dental care including dentures	12.3%	25	40.2%	45	22.2%	70
Emergency medical care	5.9%	12	19.6%	22	10.8%	34
Hospital care	5.9%	12	17.0%	19	9.8%	31
Laboratory services	2.0%	4	7.1%	8	3.8%	12
Mental Health services	53.4%	109	26.8%	30	44.0%	139
Physical Therapy / Rehabilitation	3.4%	7	10.7%	12	6.0%	19
Preventative healthcare (routine or	13.2%	27	13.4%	15	13.3%	42
Prescriptions / Pharmacy services	7.4%	15	12.5%	14	9.2%	29
Primary medical care (a primary	11.8%	24	12.5%	14	12.0%	38
Services for the elderly	26.0%	53	27.7%	31	26.6%	84
Specialty medical care (specialist doctors)	16.7%	34	20.5%	23	18.0%	57
Alcohol or drug abuse treatment	28.9%	59	18.8%	21	25.3%	80
Vision care (eye exams and glasses)	4.4%	9	15.2%	17	8.2%	26
Women's Health	5.4%	11	8.0%	9	6.3%	20
X-Rays or mammograms	3.9%	8	15.2%	17	7.9%	25
Do not know / None	25.5%	52	25.9%	29	25.6%	81
answered question		204		112		316
skipped question		3		6		

11. In the past 12 months, did you delay getting needed medical care for any of the following reasons? Check all answers that apply.

Could not afford	13.3%	27	46.8%	52	25.2%	79
Insurance problems or lack of insurance	5.9%	12	26.1%	29	13.1%	41
Lack of transportation	0.5%	1	27.9%	31	10.2%	32
Language barriers or could not	0.0%	0	1.8%	2	0.6%	2
Provider did not take your insurance	3.9%	8	3.6%	4	3.8%	12
Provider was not taking new patients	7.9%	16	8.1%	9	8.0%	25
Could not get an appointment soon enough	16.7%	34	15.3%	17	16.2%	51
Could not get a weekend or evening	16.7%	34	10.8%	12	14.6%	46
No, I did not have a delay in getting care	44.3%	90	21.6%	24	36.3%	114
No, I did not need medical care	21.2%	43	18.9%	21	20.4%	64
answered question		203		111		314
skipped question		4		7		

Mobile County Community Health Survey - responses to date (1/22/16)

	Online Survey		Paper Survey		All Responses	
12. When you or someone in your family is sick, where do you go for healthcare?						
Hospital Emergency Room	1.5%	3	35.1%	40	13.5%	43
My family doctor	67.3%	138	24.6%	28	52.0%	166
Any available doctor	1.0%	2	3.5%	4	1.9%	6
Urgent care clinic	26.3%	54	12.3%	14	21.3%	68
Health Department	0.0%	0	3.5%	4	1.3%	4
Community health center	0.0%	0	9.6%	11	3.4%	11
Free clinic	1.0%	2	6.1%	7	2.8%	9
VA / Military facility	1.0%	2	2.6%	3	1.6%	5
I usually go without care	2.0%	4	2.6%	3	2.2%	7
answered question	205	205	114	114		319
skipped question	2	2	4	4		

13. If you felt that you or someone in your family needed mental health services, where would you go for care?						
Hospital Emergency Room in Mobile	1.5%	3	26.6%	29	10.2%	32
Hospital Emergency Room in another	0.0%	0	4.6%	5	1.6%	5
My family doctor	26.8%	55	17.4%	19	23.6%	74
Private psychologist, psychiatrist or other	38.5%	79	11.9%	13	29.3%	92
Mental health clinic in Mobile County	7.8%	16	22.0%	24	12.7%	40
Mental health clinic in another county	0.5%	1	0.9%	1	0.6%	2
VA / Military facility	1.0%	2	0.9%	1	1.0%	3
I do not know where to go for mental health	23.9%	49	15.6%	17	21.0%	66
Other (please specify)	8	8	6	6	4.5%	14
answered question	205	205	109	109		314
skipped question	2	2	9	9		

14. Overall, how would you rate the quality of healthcare services available in Mobile County?						
Excellent	2.9%	6	5.1%	6	3.7%	12
Very Good	22.2%	46	14.5%	17	19.4%	63
Good	44.0%	91	32.5%	38	39.8%	129
Fair	24.6%	51	34.2%	40	28.1%	91
Poor	3.4%	7	9.4%	11	5.6%	18
Not sure / do not know	2.9%	6	4.3%	5	3.4%	11
answered question	207	207	117	117		324
skipped question	0	0	1	1		

15. Do you currently use any tobacco products?						
Yes, I currently smoke cigarettes or cigars	2.9%	6	32.7%	37	13.5%	43
Yes, I currently use chewing tobacco, snuff	0.5%	1	2.7%	3	1.3%	4
Yes I currently use e-cigarettes	1.0%	2	5.3%	6	2.5%	8
No, I quit 12 months ago or less	2.9%	6	4.4%	5	3.4%	11
No, I quit 1 or more years ago	17.0%	35	15.9%	18	16.6%	53
No, I have never used tobacco products	75.7%	156	38.9%	44	62.7%	200
answered question	206	206	113	113		319
skipped question	1	1	5	5		

16. How would you rate your own health today?						
Very Healthy	11.3%	23	7.0%	8	9.7%	31
Healthy	52.7%	107	29.6%	34	44.3%	141
Somewhat Healthy	31.5%	64	48.7%	56	37.7%	120
Unhealthy	3.9%	8	13.9%	16	7.5%	24
Very Unhealthy	0.5%	1	0.9%	1	0.6%	2
answered question	203	203	115	115		318
skipped question	4	4	3	3		

Mobile County Community Health Survey - responses to date (1/22/16)

	Online Survey		Paper Survey		All Responses	
17. Please indicate how strongly you agree or disagree with the following statement as it applies to you personally: I am confident that I can make and maintain lifestyle changes, like eating right, exercising, or not smoking.						
Strongly Agree	37.3%	76	24.3%	27	32.7%	103
Agree	51.5%	105	58.6%	65	54.0%	170
Disagree	9.3%	19	12.6%	14	10.5%	33
Strongly Disagree	2.0%	4	4.5%	5	2.9%	9
<i>answered question</i>	204	204	111	111		315
<i>skipped question</i>	3	3	7	7		

18. What are the top three (3) reasons that prevent you from eating healthier foods and being active? Check only three.						
Do not know how to change my diet	4.9%	10	20.4%	23	10.4%	33
Do not know how much more active I need	6.8%	14	12.4%	14	8.8%	28
Fear of failure	6.3%	13	2.7%	3	5.0%	16
Tried before and failed to change	12.7%	26	13.3%	15	12.9%	41
Healthier food is not available in my	1.0%	2	16.8%	19	6.6%	21
Cannot afford exercise equipment / gym	16.1%	33	28.3%	32	20.4%	65
Do not want to change what I eat	11.2%	23	7.1%	8	9.7%	31
Do not want to be more active	4.4%	9	0.9%	1	3.1%	10
It is not safe to exercise in my	4.4%	9	8.8%	10	6.0%	19
It is too expensive to cook / eat healthy	34.1%	70	39.8%	45	36.2%	115
Do not have time to be more active	38.0%	78	13.3%	15	29.2%	93
Do not have time to cook or shop for	30.7%	63	6.2%	7	22.0%	70
I am happy the way I am	13.2%	27	11.5%	13	12.6%	40
I already eat healthy and am active	31.7%	65	23.0%	26	28.6%	91
<i>answered question</i>	205	205	113	113		318
<i>skipped question</i>	2	2	5	5		

19. What is the zip code where you live?						
36509	0.0%		5.9%	7	2.2%	7
36521	0.5%	1	0.0%		0.3%	1
36522	1.0%	2	0.0%		0.6%	2
36523	1.4%	3	1.7%	2	1.5%	5
36525	0.5%	1	0.0%		0.3%	1
36528	0.5%	1	0.0%		0.3%	1
36541	1.9%	4	43.2%	51	16.9%	55
36544	0.5%	1	12.7%	15	4.9%	16
36571	1.0%	2	0.8%	1	0.9%	3
36575	7.2%	15	3.4%	4	5.8%	19
36582	3.4%	7	4.2%	5	3.7%	12
36587	3.9%	8	0.0%		2.5%	8
36601	0.5%	1	0.0%		0.3%	1
36603	0.5%	1	0.0%		0.3%	1
36604	0.5%	1	1.7%	2	0.9%	3
36605	2.4%	5	2.5%	3	2.5%	8
36606	5.8%	12	0.8%	1	4.0%	13
36607	1.4%	3	0.8%	1	1.2%	4
36608	15.5%	32	4.2%	5	11.4%	37
36609	6.3%	13	7.6%	9	6.8%	22
36611	1.0%	2	0.0%		0.6%	2
36613	0.0%		1.7%	2	0.6%	2
36617	0.5%	1	0.0%		0.3%	1
36618	3.9%	8	0.0%		2.5%	8
36619	6.3%	13	0.8%	1	4.3%	14
36685	1.0%	2	0.0%		0.6%	2
36691	0.0%		1.7%	2	0.6%	2
36693	1.9%	4	3.4%	4	2.5%	8
36695	30.9%	64	2.5%	3	20.6%	67
<i>Grand Total</i>		207		118		325

20. Are you male or female?						
Male	19.1%	39	18.1%	21	18.8%	60
Female	80.9%	165	81.9%	95	81.3%	260
<i>answered question</i>	204	204	116	116		320
<i>skipped question</i>	3	3	2	2		

Mobile County Community Health Survey - responses to date (1/22/16)

	Online Survey		Paper Survey		All Responses	
21. What is your race?						
Black/African-American, non-Hispanic	13.2%	27	21.6%	25	16.3%	52
Black/African-American, Hispanic	0.0%	0	0.9%	1	0.3%	1
White/Caucasian, non-Hispanic	78.9%	161	57.8%	67	71.3%	228
White/Caucasian, Hispanic	6.4%	13	12.9%	15	8.8%	28
Asian	0.0%	0	4.3%	5	1.6%	5
American Indian / Alaska Native	1.0%	2	0.0%	0	0.6%	2
Pacific Islander	0.5%	1	0.0%	0	0.3%	1
Bi-racial or multiple races	0.0%	0	2.6%	3	0.9%	3
answered question	204	204	116	116		320
skipped question	3	3	2	2		

22. What is your age?						
Less than 18	0.0%	0	0.0%	0	0.0%	0
18-24	3.9%	8	7.0%	8	5.0%	16
25-34	10.6%	22	11.4%	13	10.9%	35
35-44	20.3%	42	15.8%	18	18.7%	60
45-54	25.6%	53	27.2%	31	26.2%	84
55-74	38.2%	79	32.5%	37	36.1%	116
75+	1.4%	3	6.1%	7	3.1%	10
answered question	207	207	114	114		321
skipped question	0	0	4	4		

23. What is the highest level of school you have completed or highest degree you have received?						
Grades 1 through 8	0.0%	0	4.4%	5	1.6%	5
Some high school (grades 9 through 11)	0.0%	0	14.0%	16	5.0%	16
High school diploma / GED	7.2%	15	31.6%	36	15.9%	51
Vocational/Tech School	2.4%	5	4.4%	5	3.1%	10
Some college	11.6%	24	14.0%	16	12.5%	40
2-year college degree	15.5%	32	9.6%	11	13.4%	43
4-year college degree	34.3%	71	12.3%	14	26.5%	85
Graduate or professional degree	29.0%	60	9.6%	11	22.1%	71
answered question	207	207	114	114		321
skipped question	0	0	4	4		

24. What is your current employment status?						
Disabled / unable to work	0.5%	1	22.6%	26	8.4%	27
Employed full-time	85.9%	177	28.7%	33	65.4%	210
Employed part-time	7.8%	16	11.3%	13	9.0%	29
Homemaker	0.5%	1	3.5%	4	1.6%	5
Retired	2.9%	6	11.3%	13	5.9%	19
Seasonal worker	0.0%	0	1.7%	2	0.6%	2
Student	0.5%	1	0.9%	1	0.6%	2
Self-employed	1.5%	3	3.5%	4	2.2%	7
Unemployed	0.5%	1	16.5%	19	6.2%	20
answered question	206	206	115	115		321
skipped question	1	1	3	3		

25. What is your annual family income?						
Less than \$15,000/year	2.5%	5	62.5%	65	23.3%	70
\$15,001 - \$25,000/year	8.1%	16	11.5%	12	9.3%	28
\$25,001 - \$35,000/year	8.1%	16	9.6%	10	8.6%	26
\$35,001 - \$50,000/year	10.2%	20	8.7%	9	9.6%	29
\$50,001 - \$75,000/year	21.8%	43	2.9%	3	15.3%	46
\$75,001 - \$100,000/year	16.2%	32	1.0%	1	11.0%	33
\$100,001 or more/year	33.0%	65	3.8%	4	22.9%	69
answered question	197	197	104	104		301
skipped question	10	10	14	14		

26. Where did you take this survey?						
A church	1.1%	2	42.3%	33	13.7%	35
A Health Fair	1.1%	2	2.6%	2	1.6%	4
Health Clinic	2.3%	4	15.4%	12	6.3%	16
Senior Center	0.0%	0	3.8%	3	1.2%	3
Providence Hospital	95.5%	169	35.9%	28	77.3%	197
Other (please specify)	32	32	32	32	25.1%	64
answered question	177	177	78	78		255
skipped question	30	30	40	40		

Providence Hospital 2014-16 Community Health Implementation Strategy (CHIS) Progress Report

Community Health Needs Assessment (CHNA) 2012 Priorities:

1. Good Nutrition/Obesity Prevention
2. Free/Subsidized Care/Access to Care
3. Mental Health
4. Diabetes Education and Support
5. Cardiac and Vascular Health

Priority Area: Good Nutrition/Obesity Prevention	
Strategy 1:	Establish a community garden, along with planting fruit and nut trees, to benefit agencies that serve the poor (McKemie Place, St. Mary's Home, Senior Center), our associates and community members.
Activity / Accomplishments:	
<ul style="list-style-type: none">• Summer and Fall harvests given to Penelope House—services for victims of domestic violence• Summer and Fall harvests given to Providence Senior Center• 3rd summer harvest has been planted	
Strategy 2:	Work with Feeding America/Bay Area Food Bank to provide access to healthy food.
Activity / Accomplishments:	
<ul style="list-style-type: none">• Staff from Diabetes Center gave lectures at 2 annual programs• Contributed to School Back pack program 2 times @ \$1500 each for 30 children• Packed and distributed 400 boxes of food in a low income community• Signed a food contract with Bay Area Food Bank to establish a Food Pantry at Providence's Senior Center/Guadalupe Center to serve 50 low income families.	

Strategy 3:	Provide nutrition education to clients of agencies that serve the poor, to our associates and to the community.
Activity / Accomplishments: <ul style="list-style-type: none"> • RN CDE and Nutritionist from diabetes center have provided scheduled educational session to participants at Senior Center on Cody Road <ul style="list-style-type: none"> ○ 1 per quarter ○ 20-24 participants each 	
Strategy 4:	Establish a farmer's market on campus to serve our associates and the surrounding community, inviting local growers.
Activity / Accomplishments: <ul style="list-style-type: none"> • Farmers Market to be on campus starting in April 2016 	
Strategy 5:	Pursue a grant for a fitness trail and/or walking trail.
Activity / Accomplishments: <ul style="list-style-type: none"> • Investigation indicated not feasible on campus at this time 	
Strategy6 :	Explore ways to provide nutritional foods for indigent patients who have been identified by case management staff, possibly establishing a partnership with another agency.
Activity / Accomplishments: <ul style="list-style-type: none"> • Established a food pantry for patients, families and staff in need. • Developed bags for discharged homeless patients <ul style="list-style-type: none"> ○ Distributed at least 60 bags 	
Strategy 7:	Explore the development of a bariatric center of excellence.
Activity / Accomplishments: <ul style="list-style-type: none"> • Not feasible 	

Priority Area: Free/Subsidized Care/Access to Care	
Strategy 1:	Implement our own Access to Care/Patient Eligibility and Enrollment Program for the community (Medicare, CHIPS, FFE-Federal Facilitated Exchanges, Ozanam, Pharmacy Assistance Programs, WIC, SNAP, TANF, other resources as appropriate and available).
Activity / Accomplishments:	
<ul style="list-style-type: none"> • ACA navigators hosted 57 outreach events, reached 3,536 consumers, successfully reenrolled 595. • Financial Counselors worked with 189 referrals from the CARE line with enrollment in medication assistance, Medicaid applications, insurance coverage, community resources, etc. 	
Strategy 2:	Explore feasibility of urgent care clinic on campus, with special emphasis on enrolling clients in eligible services and finding medical homes for the unattached and uninsured.
Activity / Accomplishments:	
<ul style="list-style-type: none"> • Opened an Urgent Care on campus. 	
Strategy 3:	Work with ALAHA and other hospitals, including St. Vincent's in Birmingham, on a campaign for Medicaid Expansion and Exchanges.
Activity / Accomplishments:	
<ul style="list-style-type: none"> • Administration represented on the RCO (Regional Care Organization) Board in setting up a Medicaid managed care product. 	
Strategy 4 (new):	Conducted a Medical Mission at Home in South Mobile County
Activity / Accomplishments:	
<ul style="list-style-type: none"> • 300 attended • 25 medical and community agencies participated • 89 eye glass vouchers • 200 boxes of food distributed • 27 clinical breast exams • 61 skin cancer screening • 59 flu shots 	

Priority Area: Mental Health	
Strategy 1:	Work with NAMI (National Association for Mental Illness) in <ul style="list-style-type: none"> • Providing staff education. • Providing support to their support groups and family education programs.
Activity / Accomplishments:	
<ul style="list-style-type: none"> • Sent a social worker and ED Case manager to a train the trainer course regarding the mentally ill • \$4,500 to their support groups and family education programs. 	
Strategy 2:	Explore collaboration with AltaPonte for outpatient treatment of indigent patients and their families.
Activity / Accomplishments:	
<ul style="list-style-type: none"> • AltaPonte Outreach program established in South Mobile County for mental health referrals 	

Priority Area: Diabetes Education and Support	
Activity / Accomplishments:	
<ul style="list-style-type: none"> • Supported the Diabetes Association Walk. 300 walkers/\$90K raised • Providence supported juvenile Diabetes Camp for 110 campers 	
Strategy 1:	Pilot a disease management program with a primary goal of reducing unnecessary admissions and complications for a target population of indigent clients that could involve: <ul style="list-style-type: none"> • Home visits • Supplies • Medications • Transportation
Activity / Accomplishments:	
<ul style="list-style-type: none"> • Develop a culturally specific Diabetes Education support program for south Mobile County which involves A1C monitoring • Provided Diabetes educational and A1C monitoring to the uninsured 	
Impact:	
<ul style="list-style-type: none"> • Reduction of A1C from 8.5 to 5.3 average for Victory Health Partners Clinic 	

Priority Area: Cardiac and Vascular Health	
Strategy 1:	Collaborate with other agencies, in a community wide tobacco cessation and prevention program.
Activity / Accomplishments:	
<ul style="list-style-type: none"> • Offered community wide tobacco cessation and prevention program at a reduced rate • Caring Hearts Clinic offers congestive heart failure education to community members 	
Strategy 2:	Build on our current strengths in our cardiac and stroke service lines to provide education and support in our community.
Activity / Accomplishments:	
<ul style="list-style-type: none"> • Resource Guide widely distributed • Supported the American Association Heart Walk • Supported the Heart to Heart education series 	

**RESOLUTIONS OF THE BOARD OF DIRECTORS
OF PROVIDENCE HOSPITAL**

The Board of Directors of Providence Hospital ("Corporation" or "Hospital") adopts the following resolutions at a meeting duly held on May 13, 2016, at which a quorum of Directors was present.

RECITALS

- A. Section 501(r) of the Internal Revenue Code and the regulations promulgated hereunder (collectively, "501(r)") imposes certain requirements on 501(c)(3) "hospital organizations" and "hospital facilities" (as those terms are defined in 501(r)). Each hospital facility is required, among other things, to conduct a community health needs assessment ("CHNA") and adopt an implementation strategy ("IS") to meet the identified health needs at least once every three (3) tax years.
- B. Pursuant to 501(r), Hospital conducted a CHNA for the community the Hospital serves. The CHNA is attached as Exhibit A.
- C. The Hospital completed the following steps in conducting its CHNA in compliance with 501(r): (1) defining the "community" served; (2) assessing the health needs of that community; (3) soliciting and taking into account input received from persons who represent the broad interests of the community, including those with special knowledge of or expertise in public health; and (4) documenting the CHNA in a written report.
- D. Pursuant to 501(r), a Hospital needs to prepare an IS to meet the community health needs identified through the CHNA (each a "health need") that, with respect to each significant health need, either (1) describes how the Hospital plans to address the health need, or (2) identifies the health need as one the Hospital does not intend to address and explains the reason(s) for that determination.
- E. 501(r) requires that the Corporation's Board of Directors adopts the CHNA, attached as Exhibit A.

NOW, THEREFORE, in consideration of the foregoing:

BE IT RESOLVED that the Board of Directors hereby approves and adopts the CHNA attached as Exhibit A.

BE IT FURTHER RESOLVED that the officers and management of Corporation be, and they hereby are authorized and directed to make the CHNA widely available to the public in compliance with 501(r).

BE IT FINALLY RESOLVED that the officers and management of Corporation be, and they hereby are authorized and directed to take such other actions as are necessary to prepare the IS and, thereafter, seek approval and adoption of the IS by the Corporation's Board of Directors and the Gulf Coast Health System Board of Directors.

The above resolutions are adopted this 13th day of May, 2016, and made effective as of the same day.


Assistant Secretary